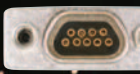


RECTANGULAR

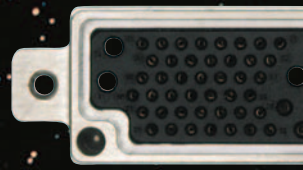
INFINITE POSSIBILITIES.



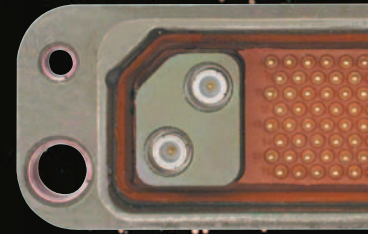
Micro-D



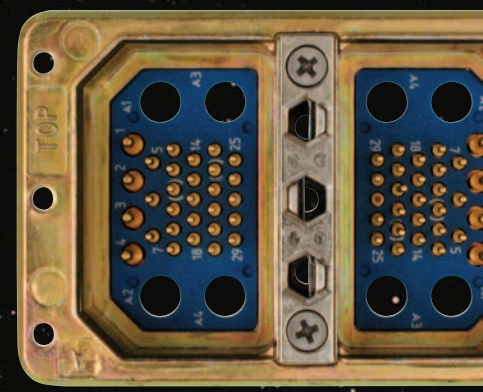
D-Sub



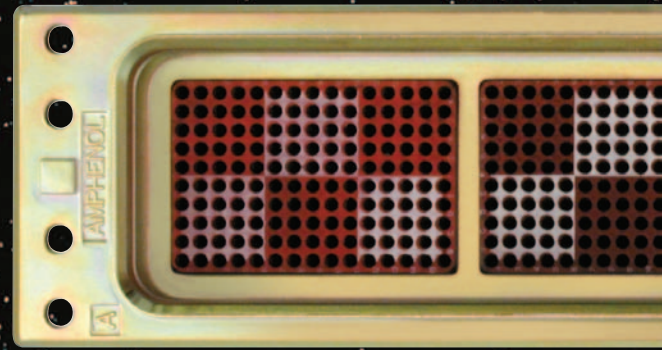
Rectangular 38999



83733 and JN1122



ARINC 404



ARINC 600

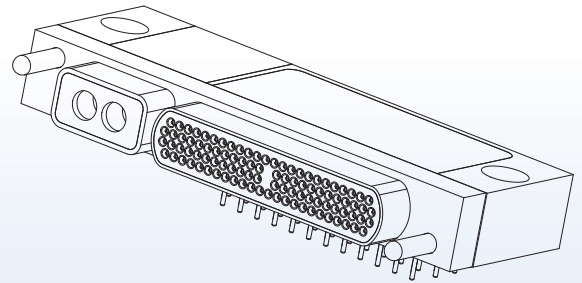
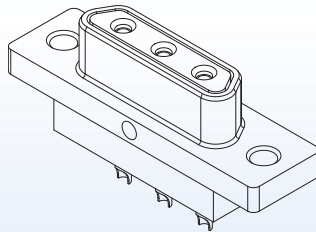
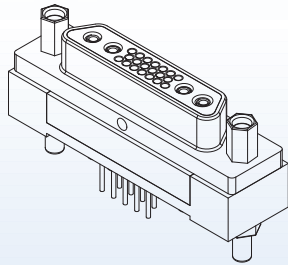
Amphenol[®]
Rectangular and Filtered Products



AMPHENOL MICRO-D

Amphenol Phoenix Interconnect Micro Connectors provide small connector solutions which will exceed the requirements of the US military standard 83513. What differentiates Amphenol from the competition is our overall connector design. Custom solutions can easily be engineered to ensure exact performance in any application.

AMPHENOL PHOENIX INTERCONNECT INC. is not limited to the traditional MIL-DTL83513 rectangular connectors but has also developed and produced circular connectors, strip connectors, PC board connectors, and hybrid connectors utilizing power, signal, coaxial and fiber optics contacts.



100 R X XXX X - X X X X XX - XX HARNESSED CONNECTORS

SERIES

- 100** = Metal shell per MIL-DTL-83513
- 102** = All plastic (dimensionally identical to metal shell per MIL-C-83513)
- 104** = Stainless steel shell per M83513 (NON QPL)

INSULATOR MATERIAL

- R** = Polyphenylene Sulfide

SHELL FINISH

Omit for series 102 & 104

- A** = Anodized
- C** = Cadmium
- G** = Gold
- I** = Iridite/alodine
- N** = Electroless nickel
- T** = Tin

CONNECTOR SIZE

- 09, 15, 21, 25, 31, 37, 51, 100

CONNECTOR TYPE

- P** = Plug
- R** = Receptacle

WIRE SIZE (AWG.)

- 1** = 32
- 2** = 30
- 3** = 28
- 4** = 26(standard) *off shelf
- 5** = 25 (standard for solid uninsulated wire)
- 6** = 24

Omit for solder cup contacts

NON STD WIRE LENGTH

HARDWARE

- A** = .125 (3.175) mounting holes sizes 9-51
- F** = Captive low profile jackscrew
- F** = Standard float mount
- M6** = High profile jackscrew, slot head
- M3** = High profile jackscrew, allen head
- P** = Jackpost
- B** = Standard mounting holes
- K** = Captive high profile jackscrew
- R** = Reverse float mount
- M5** = Low profile jackscrew, slot head
- M2** = Low profile jackscrew, allen head
- T** = Threaded Inserts

WIRE LENGTH

- A** = 18.00
- B** = 36.00
- C** = 72.00
- D** = 0.500 (solid wire only)
- E** = 1.00 (solid wire only)
- F** = Non std wire length (add to end of part no.)

WIRE COLOR / FINISH

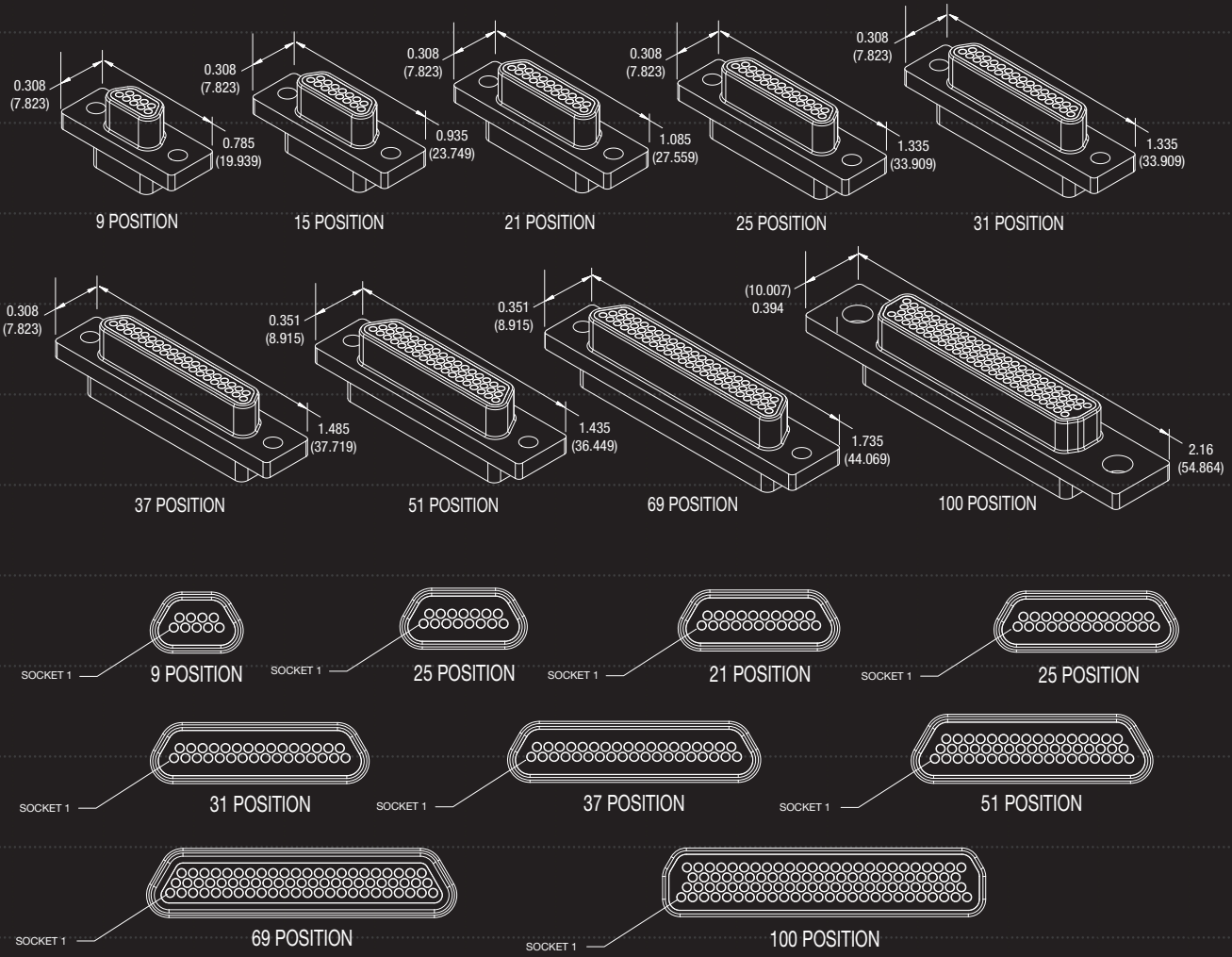
- 1** = all white
- 2** = all yellow
- 3** = solid uninsulated, tin plated
- 4** = solid uninsulated, gold plated
- 5** = color coded per mil-std-681, system 1
- 6** = 1" 10 colors blk. thru wht. repeated
- 7** = 1" 15 colors blk. thru wht./yel. repeated

WIRE TYPE

- A** = 7 strd, per NEMA-HP3 (MIL-W-16878/4)
- C** = 19 strd, per NEMA-HP3 (MIL-W-16878/4)
- E** = per MIL-W-22759/11
- F** = per MIL-W-22759/33
- B** = 7 strd, per NEMA-HP3 (MIL-W-16878/6)
- D** = 19 strd, per NEMA-HP3 (MIL-W-16878/6)
- L** = solid uninsulated

Wire lengths are in inches.

Please visit
www.amphenol-api.com
 or contact the factory directly at 714-259-7515.



100 R X XX X - BR X X X - XX PCB CONNECTORS

- SERIES**
 - 100 = Metal shell per MIL-C-83513
 - 102 = All plastic (dimensionally identical to metal shell per MIL-C-83513)
 - 104 = Stainless steel shell per M83513 (NON QPL)
- INSULATOR MATERIAL**
 - R = Polyphenylene Sulfide
- SHELL FINISH**
 - A = Anodized
 - C = Cadmium
 - G = Gold
 - I = Iridite/alodine
 - N = Electroless nickel
 - T = Tin
 - Omit for series 102
- CONNECTOR SIZE**
 - 09, 15, 21, 25, 31, 37, 51, 100
- CONNECTOR TYPE**
 - P = Plug
 - R = Receptacle
- NON STD WIRE LENGTH**
 - (EX = .125)
- LEAD LENGTH**
 - 1 = .109 ± .015
 - 2 = .140 ± .015
 - 3 = .172 ± .015
 - 4 = .250 ± .015
 - F = Non std. wire length
- THREADED INSERT**
 - T = Threaded insert
 - Omit for no threaded insert
- HARDWARE**
 - P = Jackpost
 - Omit for no jackpost
- TERMINATION TYPE**
 - BS = straight PCB termination per
 - BR = 90° PCB termination per
 - CBR = narrow 90° PCB termination per
 - M83513/22, 23, 24, 25, 26, 27
 - M83513/16, 17, 18, 19, 20, 21
 - M83513/10, 11, 12, 13, 14, 15
 - C6 = Straight Footprint Style 6
 - C16 = Straight Footprint Style 16
 - C8 = RT Angle Footprint Style 6
 - C18 = RT Angle Footprint Style 16

PCB tail lengths are in inches.

For catalogue follow link:
WWW.amphenolcanada.com/ProductSearch/pdf/API_CAT.pdf
 or contact the factory directly at 714-259-7515.

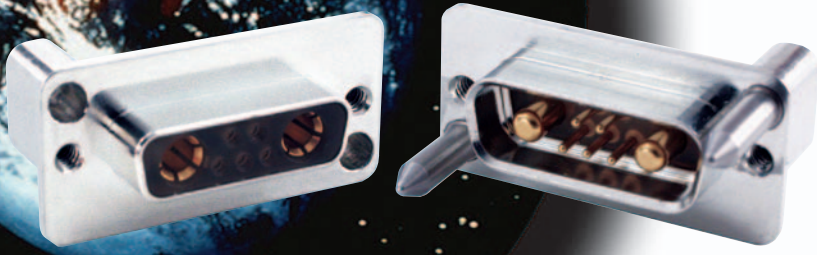
TELEPHONE: (714) 259-7515 Fax: (714) 259-7503 E-MAIL: SALES@AMPHENOLCANADA.COM





AMPHENOL SD308 & C308

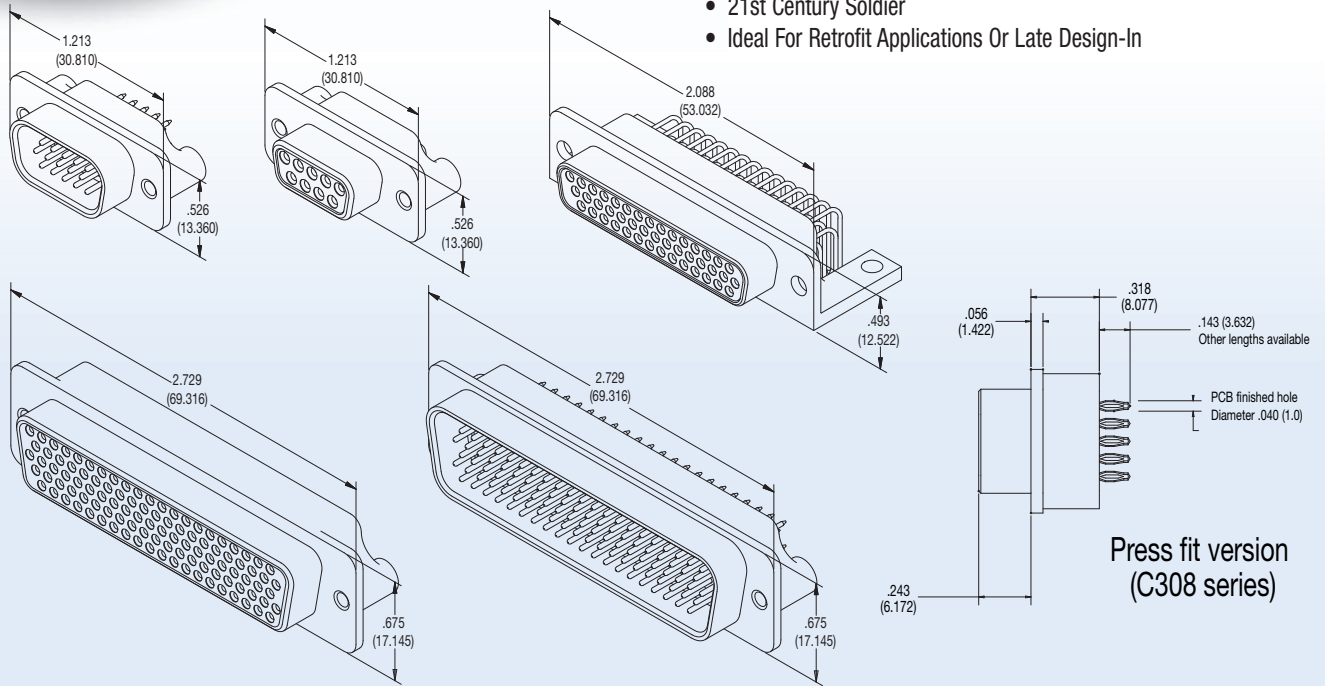
(PRESS FIT TERMINATION)



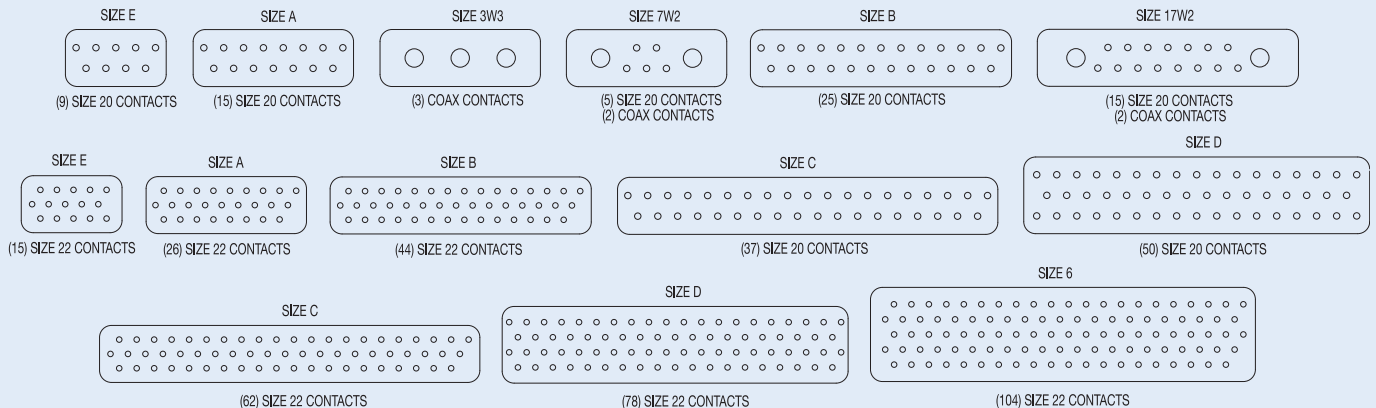
For Sea, Air or Land, these connectors are SEALED!
Amphenol's SD308 Sealed D-Subminiature and Press Fit (C308 Series) Connectors are available in the full range of standard density and hi-density insert arrangements, pin and socket contacts. These connectors are supplied with fixed screw machine contacts and are available in Solder Cup, Straight PCB, Right Angle PCB.

Applications:

- Ruggedized Computers and Peripheral Equipment
- Industrial Controllers
- 21st Century Soldier
- Ideal For Retrofit Applications Or Late Design-In



Press fit version
(C308 series)



Please visit
<http://www.amphenolcanada.com>
or contact the factory directly at 416-291-4401.

RECTANGULAR

SD308

SPECIFICATIONS

PRODUCT FEATURES:

- ONE PIECE MACHINED ALUMINUM SHELL
- GOLD PLATED SCREW MACHINE CONTACTS
- HI GRADE THERMOPLASTIC INSERTS -67°F TO +257°F (-55°C TO +125°C)
- INTEGRATED BLIND PANEL MOUNTS
- SUPPLIED WITH CONDUCTIVE PANEL SEAL GASKET

MATERIALS AND PLATINGS:

| | |
|----------|--|
| SHELLS | MACHINED ALUMINUM ALLOY, TIN PLATED |
| INSERTS | HIGH TEMPERATURE RESISTANT POLYETHERSULFONE PER MIL-P-46185 |
| CONTACTS | COPPER ALLOY, 20µ" (0.51µM) GOLD PLATED OVER NICKEL |
| SEAL | CONDUCTIVE SILICONE ELASTOMER WITH NICKEL PLATED GRAPHITE FLAKE |

ELECTRICAL DATA:

| | |
|-----------------------|-------------------------------------|
| CURRENT RATING | 5A |
| INSULATION RESISTANCE | 5 GIGOHM @ 500 VDC |
| WORKING VOLTAGE | 120 VAC |
| D.W.V. | 1,000 VAC PIN TO PIN & PIN TO SHELL |

CLIMATIC DATA:

| | |
|-----------------------|-----------------------------------|
| OPERATING TEMPERATURE | -67°F TO +257°F (-55°C TO +125°C) |
|-----------------------|-----------------------------------|

SD308 - E09 - S - A - 1 - 000

SERIES

SD308 SERIES

SHELL SIZE & NUMBER OF CONTACTS

STD Density E09, A15, B25, C37, D50
HIGH Density E15, A26, B44, C62, D78, 6-104

CONTACT GENDER

P - Pin
S - Socket

DEVIATION

000 - Standard part other deviations as required

MOUNTING TYPE

1 - 4-40 Blind nut
2 - 4-40 Blind nut with R/A mounting bracket

TERMINATION STYLE

A - Right angle PCB
B - PCB
C - Solder cup

C308 - C - 062 - S - B - 1 - 1 - 000

SERIES

C308 Compliant D SUB

SHELL SIZE

E, A, B, C, D, 6

INSERT PATTERN

Number of contacts
009, 015, 025, 026, 037, 044, 050, 062, 078, 104

CONTACT GENDER

P - Pin
S - Socket

DEVIATION

000 - STD
Consult factory for special features.

SHELL FINISH

1 - Electroless nickel 2 - OD chromate
3 - Tin 4 - Gold

MOUNTING TYPE

1 - Ø.120 Mount 2 - 4-40 Clinch
Others to include standoff, brackets

B - Vertical mount

Please visit

http://www.amphenolcanada.com/ProductSearch/pdf/DSUB_CAT.pdf
or contact the factory directly at 416-291-4401.

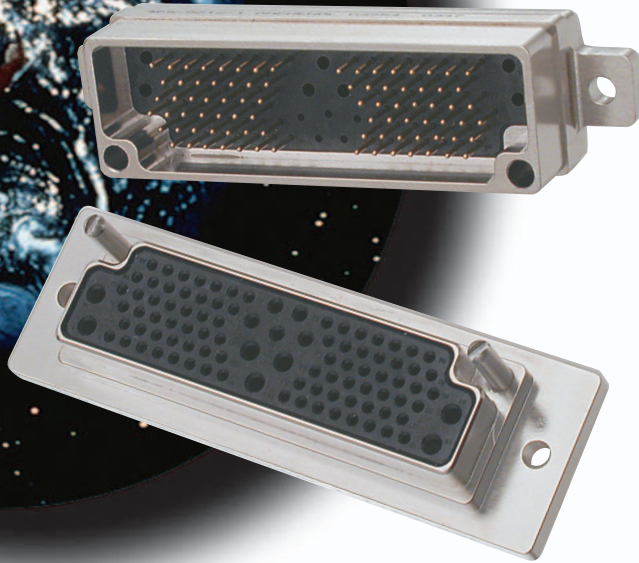
TELEPHONE: (416) 291-4401 Fax: (416) 292-0647 E-MAIL: SALES@AMPHENOLCANADA.COM

RECTANGULAR



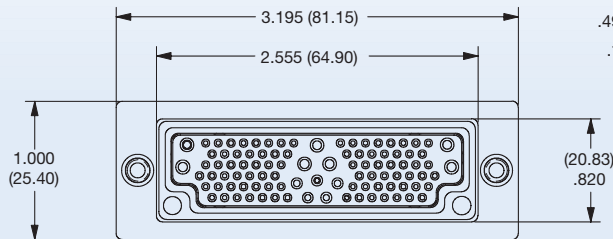


AMPHENOL R39 RECTANGULAR 38999

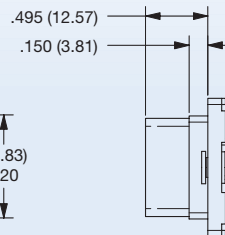


The R39 provides high performance in the severe environment demands of military specifications. Its lower profile translates into a smaller space-saving footprint and the new rectangular orientation provides additional installation options. It is available in a high density, up to 127 pin contact version providing a wider range of engineering applications. It delivers the same reliable, familiar benefits found in our 38999 connector: effortless installation; blind push pull mating; extreme durability; quick mate. Using the same wide range of contacts, and the crimp and insert /removal tooling as 38999, it delivers just a little more.

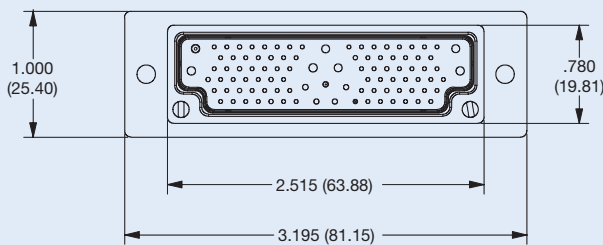
- Rectangular space savings
- Low profile
- High density 127 position inserts or mixed inserts with power, RF or fibre-optic available
- Uses same contacts as standard 38999
- Blind mate
- Rugged



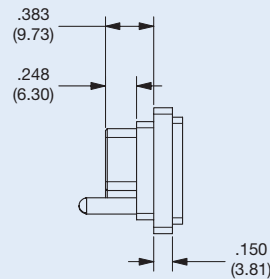
RECEPTACLE Connector



CONTACTS AVAILABLE WITH CRIMP, PCB OR COMPLIANT



PLUG Connector



Please visit
<http://www.amphenolcanada.com>
 or contact the factory directly at 416-291-4401.

ELECTRICAL CHARACTERISTICS

DIELECTRIC WITHSTANDING VOLTAGE:
 1500 VAC @ SEA LEVEL
 500 VDC @ 70,000 FT. (21,280 M)

INSULATION RESISTANCE:
 5000 MEGOHMS @ 500 VDC

CONTACTS:
 PER M39029/57 AND M39029/58 FOR SIGNAL AND POWER
 PER M39029/102 AND 103 FOR COAX
 FIBRE-OPTIC CONTACTS AVAILABLE

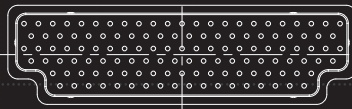
CONTACT TERMINATIONS:
 CRIMP, PCB, COMPLIANT

MATERIALS:
 SHELL ALUMINUM ALLOY
 INSERT THERMOPLASTIC PER MIL-P-46185
 HARDWARE CRES
 CONTACT RETENTION BECU

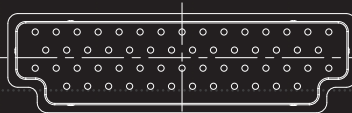
AVAILABLE SHELL FINISHES:
 ELECTROLESS NICKEL, OD CHROMATE OVER CADMIUM, ZINC NICKEL, TIN, GOLD

ENVIRONMENTAL CHARACTERISTICS:
 THERMAL SHOCK MIL-STD-202, METHOD 107, COND. A
 PHYSICAL SHOCK MIL-STD-202, METHOD 213, COND. A
 VIBRATION MIL-STD-202, METHOD 204, COND. B
 MOISTURE RESISTANCE MIL-STD-202, METHOD 106 (OMIT 7A AND 7B)
 DURABILITY 500 CYCLES MATING/UN-MATING

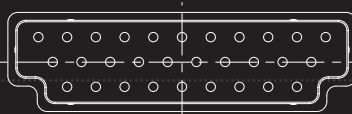
INSERT ARRANGEMENTS



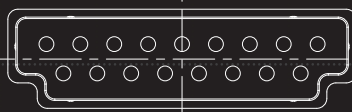
INSERT 127 - ALL SIZE 22



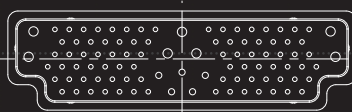
INSERT 56 - ALL SIZE 20



INSERT 31 - ALL SIZE 16



INSERT 17 - ALL SIZE 12



INSERT 98 - 86 SIZE 22
 5 SIZE 20, 7 SIZE 16

R39 P 098 P T A 1 000

SERIES

Rectangular 38999
 Connector Series

SHELL STYLE

R - Receptacle
 P - Plug

INSERT PATTERN

127, 098, 056, 031, 017
 (represents the total # of contacts in the insert) Filtered R39 configurations available. Consult factory.

CONTACT GENDER

P - Pin
 S - Socket

DEVIATION

000 - STD
 Consult factory for special features

SHELL FINISH

1 - Electroless nickel
 2 - OD chromate
 3 - Tin
 4 - Gold

MOUNTING TYPE

A - Standard mount
 B - Float

CONTACT TERMINATION

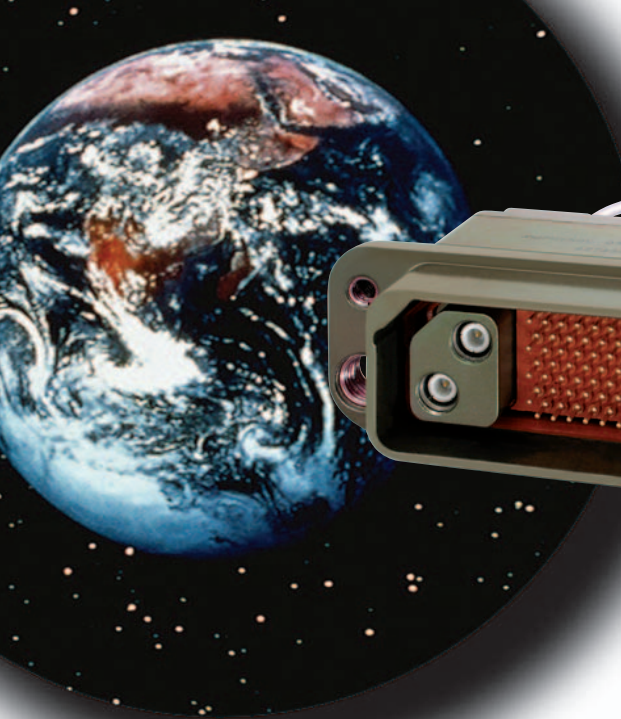
T - Crimp
 B - PCB
 C - Compliant

Please visit
http://WWW.amphenolcanada.com/ProductSearch/pdf/R39_CAT.pdf
 or contact the factory directly at 416-291-4401.

TELEPHONE: (416) 291-4401 Fax: (416) 292-0647 E-MAIL: SALES@AMPHENOLCANADA.COM

RECTANGULAR





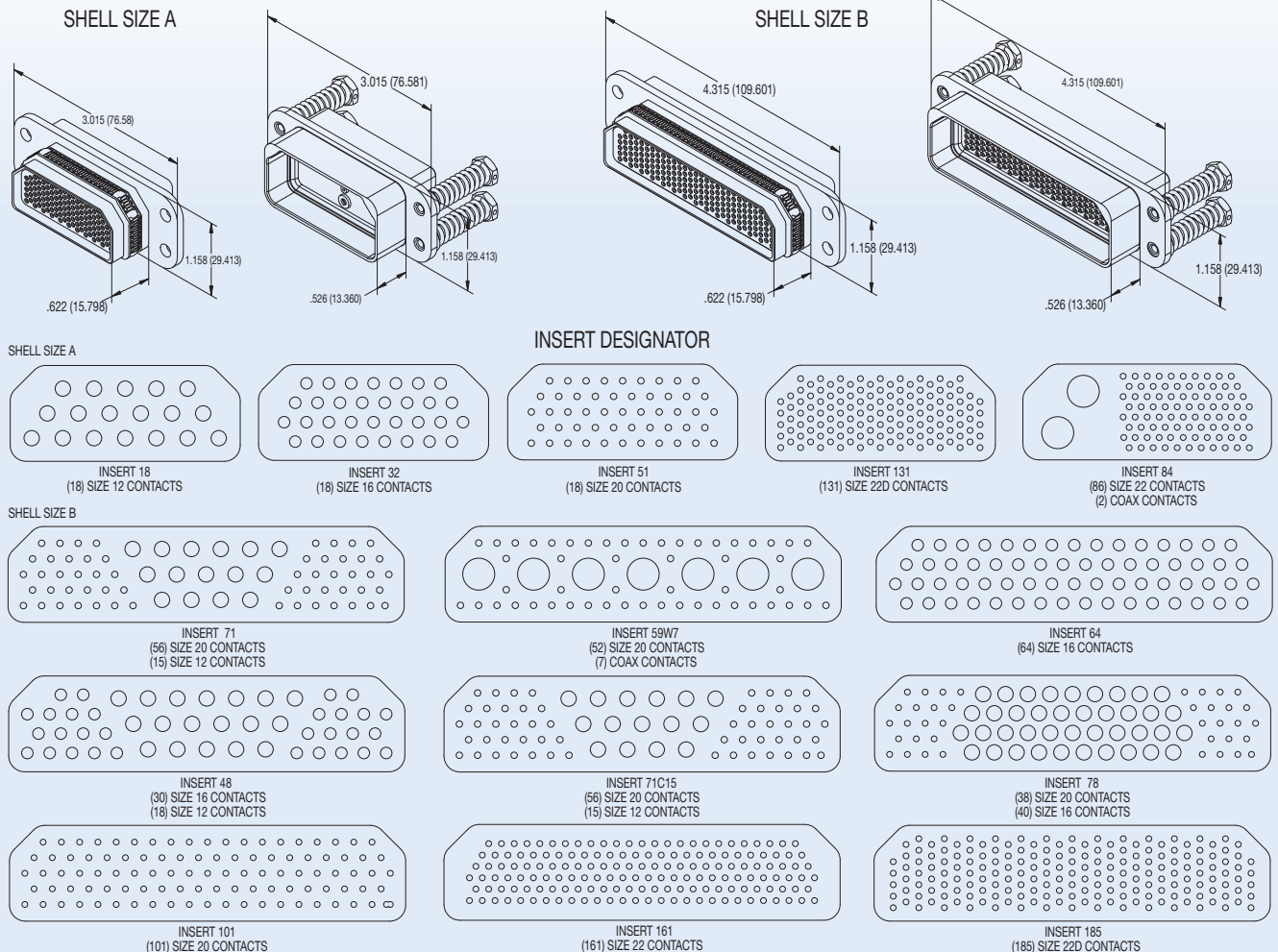
AMPHENOL R58



The Amphenol R58 series are high performance environment-resistant, rectangular connectors designed to exceed the requirements of MIL-DTL-83733 and to meet the EFA requirements of JN1122. The series is well suited for hostile military aircraft applications where environment is an issue or shielding effectiveness and corrosion resistance is mandatory.

The connectors are available in two shell sizes with a variety of hard and spring mounting configurations. A broad range of contact arrangements are available from custom to 185 standard contacts. The standard contacts are available in sizes 12, 16, 20 and 22D in crimp and PCB. Fibre optic contacts are also available. Shells are machined aluminum alloy with several finish options, including OD Chromate over Cadmium over Electroless nickel finish. Insulators are a high grade, plastic to MIL-M-14. Silicone rubber is used for grommets, interfacial seals and peripheral seals.

Filtered versions are also available (458 Series).



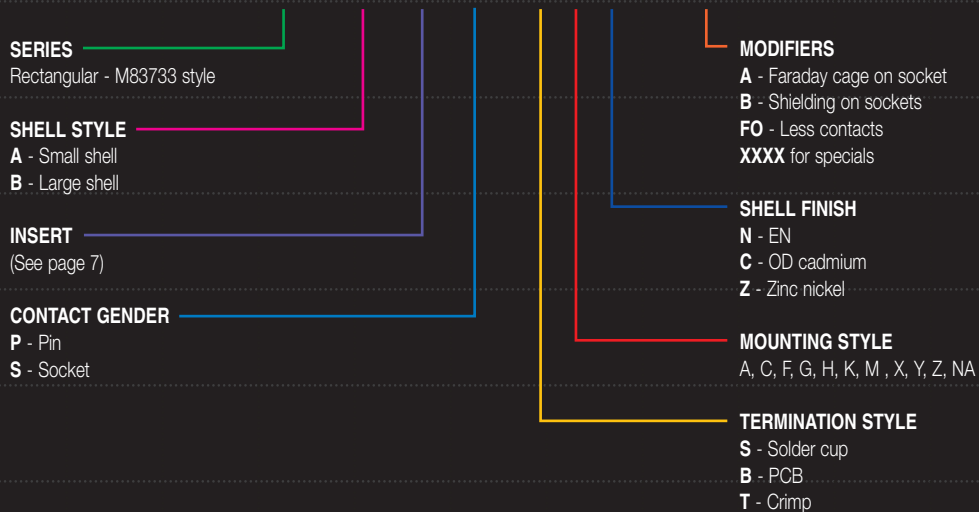
Please visit
<http://www.amphenolcanada.com>
 Contact the factory directly at 416-291-4401.

ELECTRICAL CHARACTERISTICS

- **DIELECTRIC WITHSTANDING VOLTAGE:**
1500 VAC @ SEA LEVEL
500 VDC @ 70,000 FT. (21,280 M)
- **INSULATION RESISTANCE:**
5000 MEGOHMS @ 500 VDC
- **CONTACTS:**
PER M39029/4 AND M39029/5 FOR SIGNAL AND POWER
PER M39029/57 AND M39029/58 FOR SIZE 22D
FIBRE-OPTIC CONTACTS AVAILABLE
- **CONTACT TERMINATIONS:**
CRIMP, PCB, COMPLIANT
- **MATERIALS:**

| | |
|-------------------|----------------------------|
| SHELL | ALUMINUM ALLOY |
| INSERT | THERMOPLASTIC PER MIL-M-14 |
| HARDWARE | CRES |
| CONTACT RETENTION | BECU |
- **AVAILABLE SHELL FINISHES:**
ELECTROLESS NICKEL, OD CHROMATE OVER CADMIUM, ZINC NICKEL, TIN, GOLD

R58 - A 131 P - T A A - ABFO



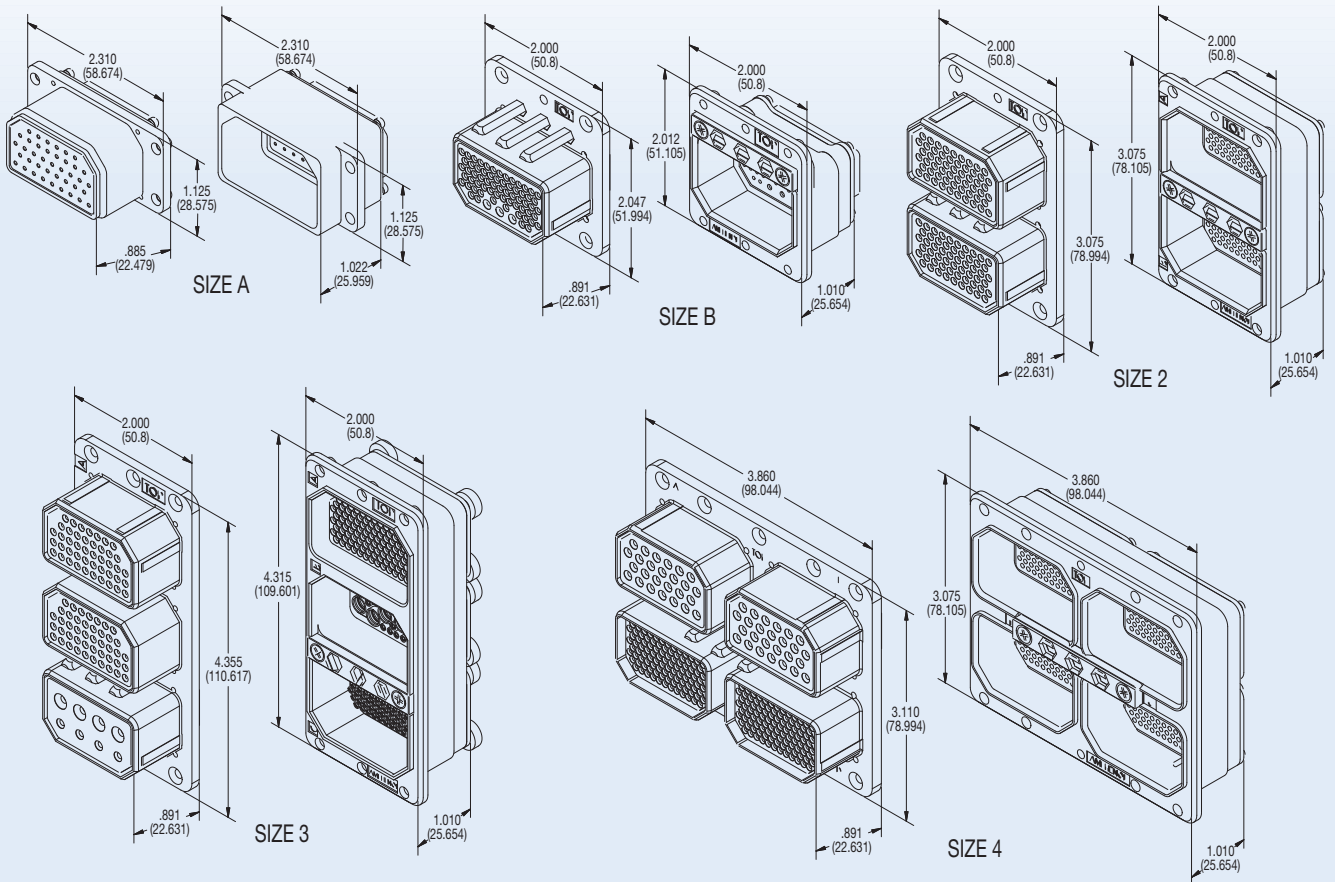
Contact the factory directly at 416-291-4401.





AMPHENOL 404

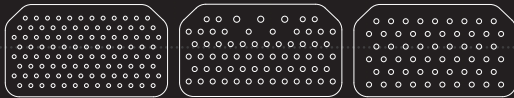
Amphenol's "AR" Series, ARINC rack and panel connectors are designed to meet or exceed the requirements of MIL-C-81659 and ARINC Specification 404. The "AR" Series is a multi-purpose connector used in Aerospace, military and computer periphery applications. These connectors are available in five shell styles with up to four insert cavities. Inserts in this product line accommodate signal and power contacts in sizes 12, 16, 20 and 22. Coaxial contacts are available in sizes 5 and 9. Insert arrangements are available utilizing a single type contact or a combination of standard and coaxial contacts. Non-environmental and environmentally sealed connectors are offered. The environmental sealing is accomplished by wire sealing grommets and interfacial seals. Application-specific designs, including transient protection and filtered, are available from Amphenol.



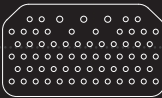
Please visit
<http://WWW.amphenolcanada.com>
 or contact the factory directly at 416-291-4401.

MATERIAL SPECIFICATIONS

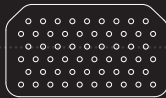
DESIGNATOR CONTACTS



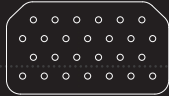
INSERT 106
(106) SIZE 22 CONTACTS



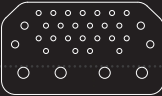
INSERT 67
(64) SIZE 20 CONTACTS
(3) SIZE 16 CONTACTS
(3) SIZE 15 COAX CONTACTS



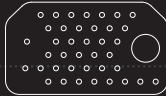
INSERT
(57) SIZE 20 CONTACTS



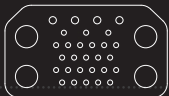
INSERT 26
(26) SIZE 16 CONTACTS
(26) SIZE 15 COAX CONTACTS



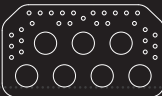
INSERT 32C4
(24) SIZE 20 CONTACTS
(4) SIZE 16 CONTACTS
(4) SIZE 9 COAX CONTACTS



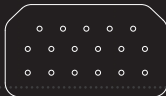
INSERT 40C1
(39) SIZE 20 CONTACTS
(1) SIZE 5 COAX CONTACT



INSERT 33C4
(25) SIZE 20 CONTACTS
(4) SIZE 16 CONTACTS
(4) SIZE 5 COAX CONTACTS



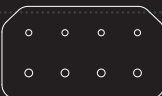
INSERT 36C7
(29) SIZE 22 CONTACTS
(7) SIZE 5 COAX CONTACTS



INSERT 17
(17) SIZE 20 CONTACTS



INSERT C8
(8) SIZE 9 COAX CONTACTS



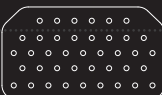
INSERT D8
(4) SIZE 12 CONTACTS
(4) SIZE 16 CONTACTS
(4) SIZE 15 COAX CONTACTS



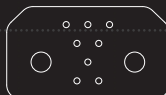
INSERT 10
(8) SIZE 20 CONTACTS
(2) SIZE 8 COAX CONTACTS



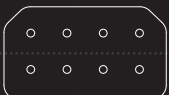
INSERT C2
(2) SIZE 1 COAX CONTACTS



INSERT 40
(40) SIZE 20 CONTACTS



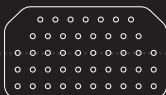
INSERT A10
(8) SIZE 16 CONTACTS
(2) SIZE 4 COAX CONTACTS



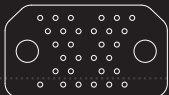
INSERT 8
(8) SIZE 12 CONTACTS



INSERT C3
(2) SIZE 7 COAX CONTACTS
(1) SIZE 3 COAX CONTACT



INSERT 45
(45) SIZE 20 CONTACTS



INSERT 32C2
(30) SIZE 20 CONTACTS
(2) SIZE 5 COAX CONTACTS



INSERT 10C3
(7) SIZE 20 CONTACTS
(3) SIZE 11 COAX CONTACTS



INSERT C6
(6) SIZE 9 COAX CONTACTS

SHELL: DIE CAST ALUMINUM ALLOY PER QQ A 501/A380, CADMIUM PLATED WITH YELLOW CHROMATE CONVERSION PER QQ-P-416, TYPE II CLASS 2.

INSERTION RETENTION PLATES: ALUMINUM ALLOY, BLUE ANODIZED PER MIL-A-8625

SCREWS & WASHERS: STAINLESS STEEL, PASSIVATED

DIELECTRIC, HARD: EPOXY, PER MIL-M-24325

KEYING POSTS AND NUTS: STAINLESS STEEL, PASSIVATED

KEYING INSERTS (RECEPTACLE ONLY): ALUMINUM ALLOY

PIN AND SOCKET BODY:

MATERIAL: COPPER ALLOY
FINISH: GOLD OVER NICKEL OVER COPPER PLATE

SOCKET SLEEVE: MATERIAL - PASSIVATED STAINLESS STEEL

COAXIAL CONTACT BODY COMPONENTS:

MATERIALS: BRASS & BERYLLIUM COPPER
FINISH: GOLD PLATED

COAXIAL CONTACT FERRULES:

MATERIALS: ANNEALED COPPER ALLOY
FINISH: GOLD PLATED

ELECTRICAL SPECIFICATIONS

INSULATION RESISTANCE: 5000 MEGOHMS @25°C

DIELECTRIC WITHSTANDING VOLTAGE (SEA LEVEL):

| | SERVICE RATING A | SERVICE RATING B |
|-----------------------------|------------------|------------------|
| ENVIRONMENTAL SEALED | 1,500V RMS | 1,800V RMS |
| NON- ENVIRONMENTAL STANDARD | 1,000V RMS | 1,500V RMS |

CONSULT CATALOGUE LINK BELOW FOR NOMENCLATURE DETAILS

AR 2 E - 112 - 4 00 01 200

SERIES

AR - ARINC 404

SHELL STYLE

A, B, 2, 3, 4

CLASS

A - Non-environmental
B - Environmental

CONNECTOR INSERT LAYOUT DESIGNATOR

(See pages 13-14 of ARINC 404 catalogue)

CUSTOMER ORDERING CODE

200 - Supplied with contacts
201 - Supplied without contacts
(See page 12 of ARINC 404 catalogue for others)

POLARIZING POSITION

00 - No keys 01 - 99

MODIFICATION CODE

(See page 15 of ARINC 404 catalogue)

SHELL TYPE

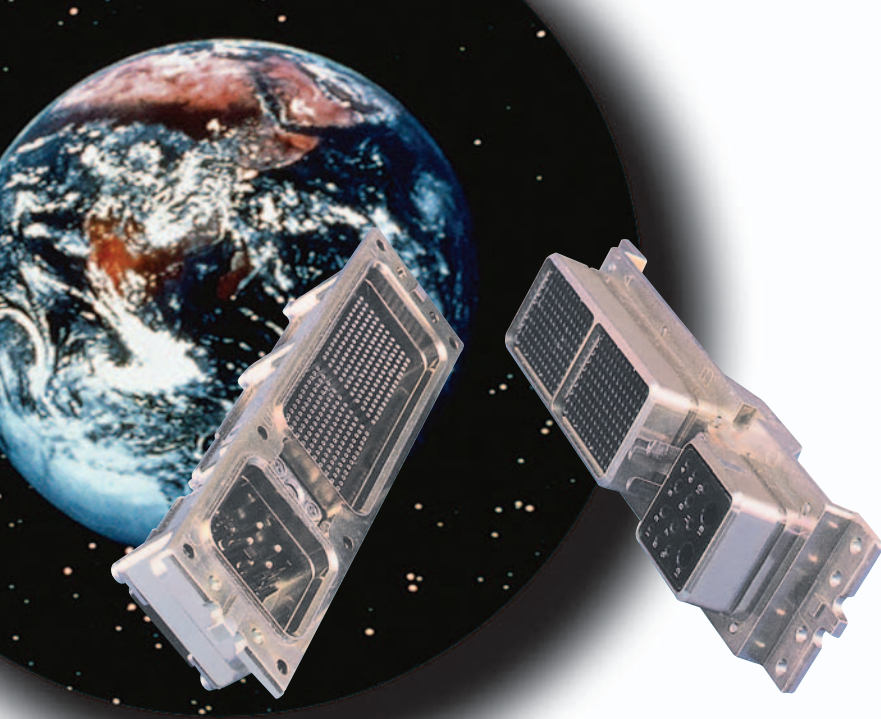
3 - Plug 4 - Receptacle

Please visit
http://WWW.amphenolcanada.com/ProductSearch/pdf/AR_BRO.pdf
or contact the factory directly at 416-291-4401.

TELEPHONE: (416) 291-4401 Fax: (416) 292-0647 E-MAIL: SALES@AMPHENOLCANADA.COM

REO-TANGLAR



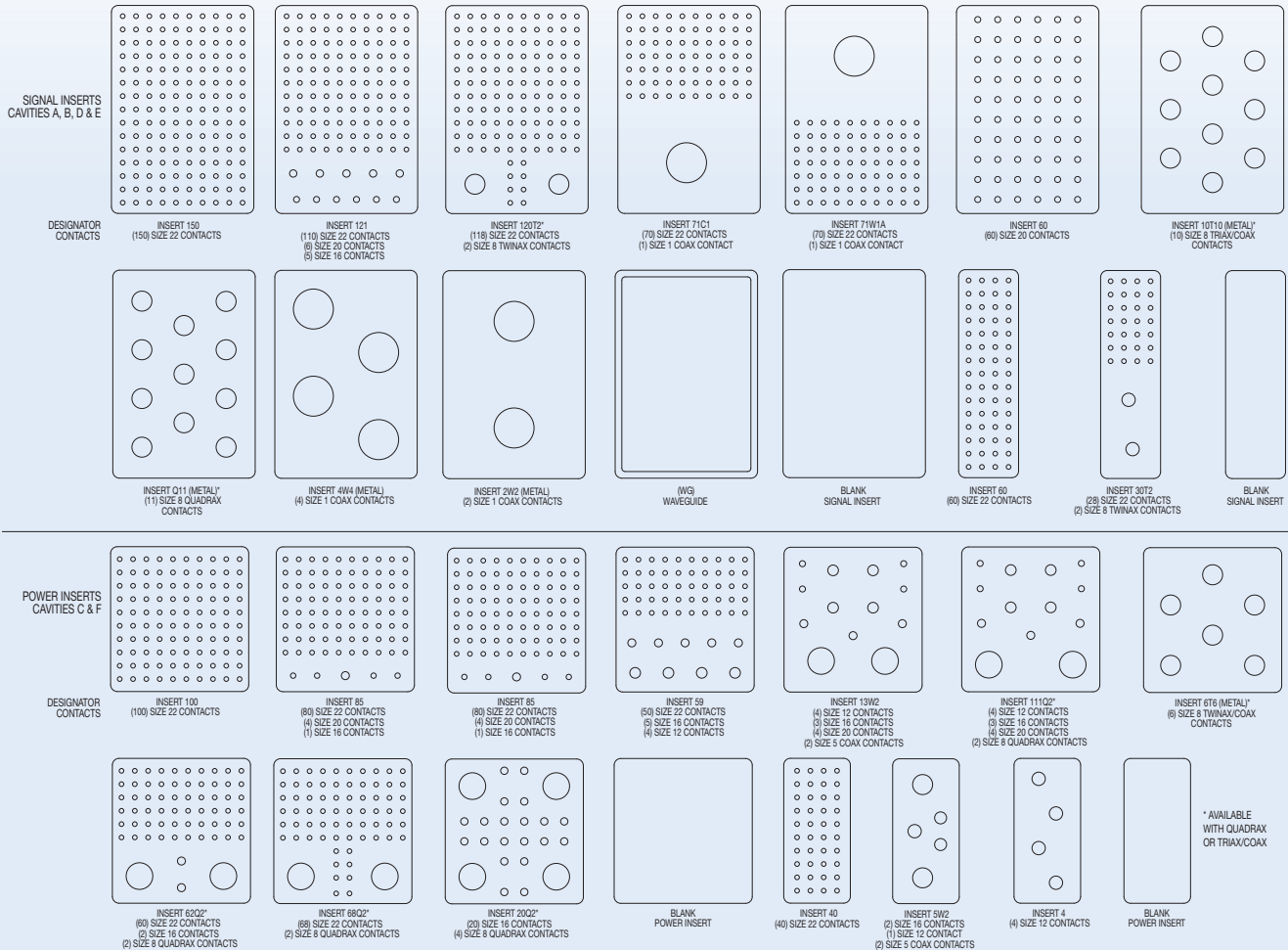


AMPHENOL 600

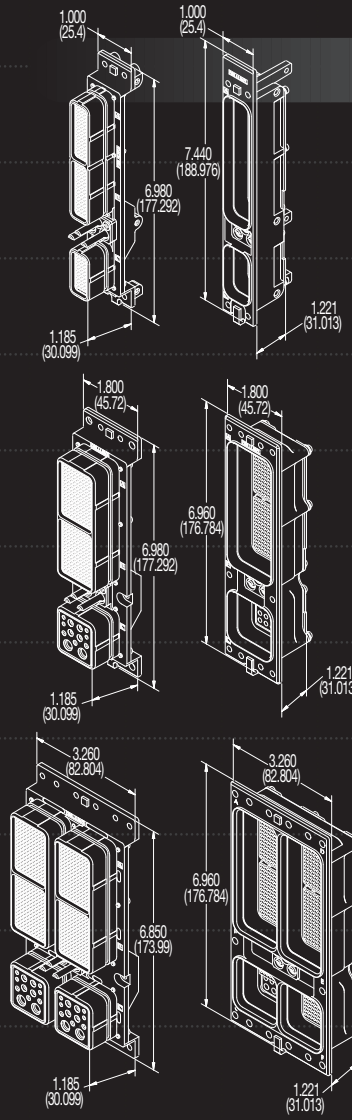
ARINC 600 Connectors are a recognized standard rack and panel connector for aircraft applications. The ARINC 600 is the successor to the ARINC 404 for many of the new avionics designs. Compared to the ARINC 404, the ARINC 600 features lower mating force contacts, increased contact count and a front release, floating keying system. Amphenol's extensive product offering will meet the most demanding needs of our customers. At the design-in stage, Amphenol's sales engineers will work with you to select a connector from our standard product line or coordinate the design of an application specific connector. Amphenol's ARINC 600 rack and panel connectors are designed to meet all relevant ARINC 600 connector specifications.

- Low insertion force contacts
- Both environmental and non-environmental versions
- Front removable keying posts
- Field replaceable inserts for size 22 and power contacts
- Up to 800 size 22 contact positions in one connector
- Crimp, coaxial, power, printed circuit, and wire wrap contacts
- Waveguide connections

RECTANGULAR



Please visit
<http://WWW.amphenolcanada.com>
 or contact the factory directly at 416-291-4401.



600 SPECIFICATIONS

SIZE 1

SIZE 2

SIZE 3

ELECTRICAL:
 DIELECTRIC WITHSTANDING VOLTAGE (DWV): 1500VRMS
 INSULATION RESISTANCE: 5.0 GIGAOHMS MIN. AT 500 VDC
 CONTACT CONTINUOUS CURRENT RATINGS:
 SIZE 22 - 5.0A SIZE 20 - 7.5A SIZE 16 - 13.0A SIZE 12 - 23.0A

MATERIALS:
 SHELLS: ALUMINUM ALLOY PER QQ-A 225/8, CADMIUM PLATE PER QQ-P-416, CLASS 2, TYPE II, YELLOW IRIDITE OR DIE CAST PER QQ-A-591, WITH CHEM FILM PER MIL-C-5541
 RETAINING PLATES: ALUMINUM ALLOY PER QQ-A-225/8, ELECTROLESS NICKEL PLATED PER MIL-C-26074
 POLARIZING KEYS: ALUMINUM ALLOY PER QQ-A-225/8, ELECTROLESS NICKEL PLATED PER MIL-C-26074
 INSULATOR MATERIAL: GLASS FILLED EPOXY (COMMERCIAL) GLASS FILLED DIALYL PHTHALATE PER MIL-M-14, TYPE SDG-F (MILITARY)
 INSERTS, GROUNDED: ALUMINUM ALLOY PER QQ-A-225/8 ELECTROLESS NICKEL PLATED PER MIL-C-26074
 SCREWS, LOCKWASHERS: STAINLESS STEEL - PASSIVATED WASHERS
 CONTACT BODIES: COPPER ALLOY GOLD PLATED PER MIL-G-45204, TYPE II, GRADE C, CLASS 1
 CONTACT RETENTION CLIPS: COPPER, GOLD PLATED PER MIL-G-45204, TYPE II, GRADE C, CLASS 1
 SEALS & GROMMETS: SILICONE/FLUOROSILICONE ELASTOMER BLEND PER MIL-R-25988
 O-RINGS: SILICONE/FLUOROSILICONE RUBBER, COLORED BLUE
 WAVEGUIDES: ALUMINUM ALLOY PER QQ-A-225/8, YELLOW IRIDITE FINISH
 EMI SPRINGS: BERYLLIUM COPPER PER QQ-C-533, ELECTROLESS NICKEL PLATED PER MIL-C-26074

A D 3 - 310 - 3 00 01 FO

- SERIES**
A - Designates Amphenol ARINC 600
- CLASS**
D - Non-environmental (rear release, crimp contacts)
E - Environmental (rear release, crimp contacts)
F - Non-environmental (front release, solder and wrap post #22 contacts, rear release all others). Consult catalogue link below for others.
- SHELL SIZE**
1 - Max. contact capacity - 160
2 - Max. contact capacity - 400
3 - Max. contact capacity - 800

- MODIFIER (Contact, Finish, Material)**
OO - Rear release, crimp, signal and power contacts supplied with connector (when applicable)
FO - Contacts not supplied with connector (FO not stamped on connector)
FR - Front release all contacts
SA - Front release .025 (0.63) D. x .150 (3.81) solder post and crimp, rear release power contacts(when applicable) supplied installed in connector.
WA - Front release .025 (0.63) Sq. x .250 (6.35) (1 wrap) wrap post and crimp, rear release power contacts(when applicable) supplied installed in connector. Consult catalogue link below for others.

- POLARIZING POSITION**
O1 thru **216** (per ARINC 600)
 Polarizing posts or keys not installed but supplied with connector

- CONNECTOR MOUNTING MODIFIER**
00 - Standard design, .148 (3.759) dia. holes
01 - With #6-32 ESNA(#12 NCFMA2-62) clinch nuts. Consult catalogue link below for others.

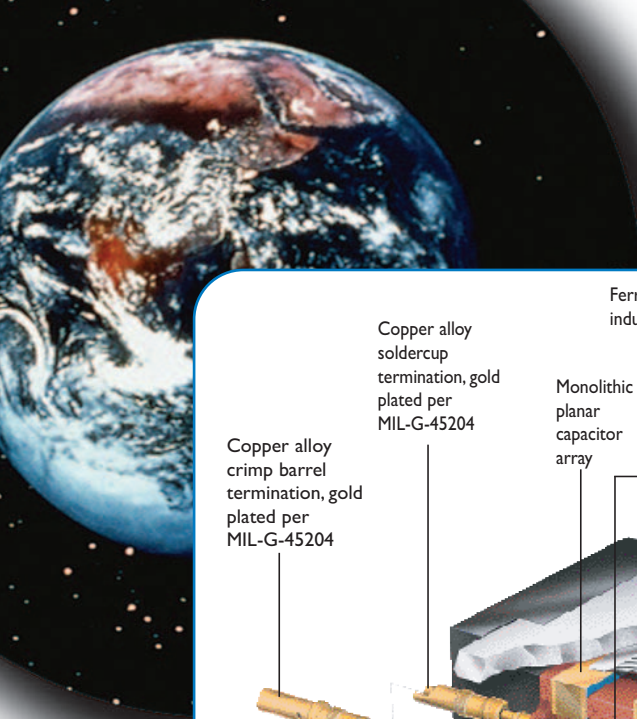
CONNECTOR LAYOUT DESIGNATOR
 (See pages 13-14 of ARINC 404 catalogue or visit our web catalogue link below)

- SHELL STYLE**
3 - Plug (rack side)
4 - Receptacle (box side)

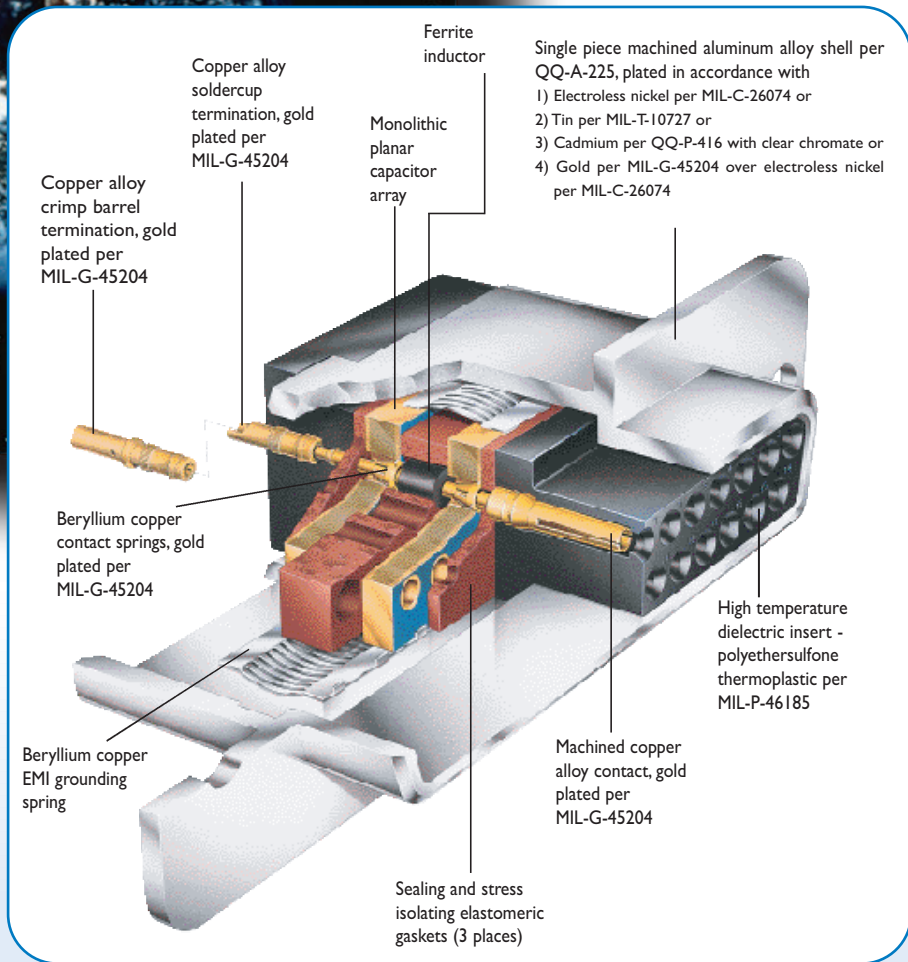
Please visit http://WWW.amphenolcanada.com/ProductSearch/pdf/A_BRO.pdf or contact the factory directly at 416-291-4401.

TELEPHONE: (416) 291-4401 Fax: (416) 292-0647 E-MAIL: SALES@AMPHENOLCANADA.COM





AMPHENOL FILTERED RECTANGULAR



Filter rectangular connectors are used to provide cost and space effective solutions to EMI problems in a wide range of military and commercial applications including avionics systems, satellites, missiles, communications, control systems and tempest equipment.

Designs feature Amphenol's unique solder-less construction which reduces stress on the ceramic elements and results in superior physical and thermal shock capabilities.

- MICRO-D
- D-SUB
- RECTANGULAR 38999
- M38733 STYLE
- ARINC 404 & ARINC 600
- FILTERED HEADERS & CUSTOM DESIGNS

RECTANGULAR

Micro-D Filter (M83513 Style)

M13 - 21 S 3 C A2 1 1 - 000



ORDERING INFORMATION

AMPHENOL SERIES
M13

CONTACT ARRANGEMENT
9, 15, 21, 25, 31, 37

CONNECTOR GENDER
P - Pin
S - Socket

TERMINATION STYLE
1 - .019 (.483) X 150 PCB
2 - .019 (.483) X .250 PCB
3 - Solder cup
4 - Right angle PCB
5 - Insulated stranded wire 18.0 (457.2)

FILTER CIRCUITS
C - Capacitive
P - Pi

SPECIAL DEVIATIONS
000 - Standard

SHELL PLATING
1 - Electroless nickel
2 - Tin
3 - Cadmium (yellow)
4 - Gold

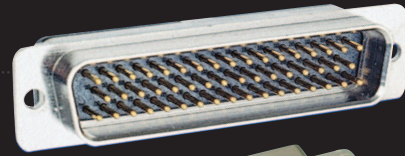
MOUNTING STYLES
1 - .092 (2.337) dia. hole
2 - 2-56 Thread
3 - Right angle mtg

CAPACITANCE
A2 - 150 - 300pF A3 - 300 - 500pF
A6 - 600 - 1000pF 01 - 1200 - 2000pF
04 - 4000 - 8000pF 08 - 8000 - 16000pF

Please visit
<http://www.amphenolcanada.com>
or contact the factory directly at 416-291-4401.

D-Sub Filter (M24308 Style)

308 - B P 1 P 08 1 1 - 000H



SERIES

Planar D-Sub

SHELL SIZE

E(1), A(2), B(3), C(4), D(5), 6

CONTACT GENDER

P - Pin S - Socket

TERMINATION STYLE

1, 2 - Vertical PCB 3 - Solder cup
4, 5, 6, 7 - Right angle PCB 9 - Crimp, non-removable

FILTER CIRCUITS

P - Pi R - CLR L - LRC
C - Capacitive T - T Style

DENSITY

H - High density
Blank - if medium

DEVIATION

000 - Standard

SHELL PLATING

1 - Electroless nickel 2 - Tin 3 - Cadmium (clear) 4 - Gold 5 - Zinc nickel

MOUNTING STYLE

1 - .120 (3.04) mounting hole 2 - 4-40 threaded clinch nut 3 - Right angle mounting bracket 4 - Right angle mounting bracket with 4-40 threaded clinch nut

CAPACITANCE (PF) Pi, C, CLR, LRC, T

A2 - 200 to 400 A4 - 400 to 800 02 - 1800 to 3600
04 - 4000 to 8000 08 - 8000 to 16000 16 - 16000 to 32000

458 Filtered (83733) & F39 Filtered (R39)

458 - A 131 P - T CA1 - XXX



SERIES

458 for FILTERED 83733
F39 for FILTERED R39

SHELL SIZE

(See R58 page 7 or R39 page 5)

INSERT

(See R58 page 7 or R39 page 5)

CONTACT GENDER

P - Pin S - Socket

000

XXX for specials

FILTER STYLE

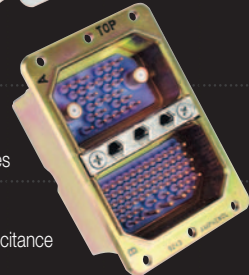
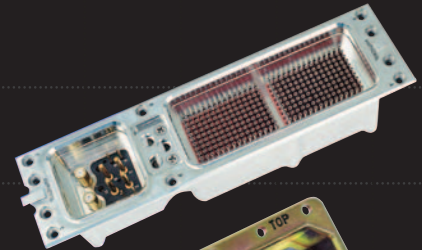
CA2, C01, C02, C10, PA4, P02, P04, P08

TERMINATION STYLES

S - Solder cup B - PCB T - Crimp

ARINC Filter (404&600)

F85 - 6 R B 2 A150B121C13W2 P 02 X



SERIES

485 is Production Part Designation
F85 is catalogue/website description only

ARINC SERIES

4 - ARINC 404 OR MIL-C-81659 6 - ARINC 600

STYLE

A - Adapter P - Plug R - Receptacle

TERMINATION

B - P.C. Tails S - Solder cup

SHELL SIZE

ARINC 404 - A, B, 2, 3 or 4 (See page 9)
ARINC 600 - 1, 2, or 3 (See page 11)

DEVIATION

CAPACITANCE
*same as 308 series

FILTER CIRCUIT

P - Pi C - Capacitance

LAYOUT DESIGNATOR

ARINC 600
Define inserts for each cavity
ARINC 404
Define inserts and gender (P or S)
for each cavity e.g. 106P)

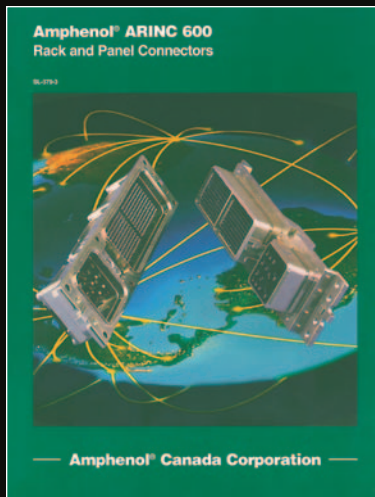
Please visit

http://www.amphenolcanada.com/ProductSearch/pdf/Mil_Aero_CAT.pdf
or contact the factory directly at 416-291-4401.

TELEPHONE: (416) 291-4401 Fax: (416) 292-0647 E-MAIL: SALES@AMPHENOLCANADA.COM

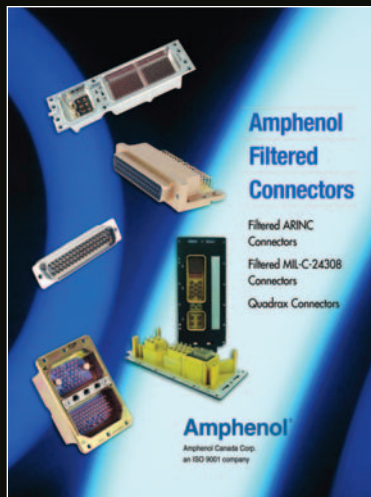


FREO-TAN-GU-AR



ARINC 600 Rack & Panel Connectors

http://WWW.amphenolcanada.com/ProductSearch/pdf/A_BRO.pdf



Filtered Connectors

http://www.amphenolcanada.com/ProductSearch/pdf/Mil_Aero_CAT.pdf



Microminiature Connectors

http://WWW.amphenolcanada.com/ProductSearch/pdf/API_CAT.pdf



ARINC 404 Rack & Panel Connectors

http://WWW.amphenolcanada.com/ProductSearch/pdf/AR_BRO.pdf



R39 Rectangular 38999 Connectors

http://WWW.amphenolcanada.com/ProductSearch/pdf/R39_CAT.pdf



Aerospace Products

<http://www.amphenol-aerospace.com/index.asp?page=table.htm>

For more information about Rectangular or other products, contact your local Amphenol Sales Representative, or contact:

Amphenol Canada - Rectangular and Filtered Products
 Phone: (416) 291-4401 Fax: (416) 292-0647
 Email: sales@amphenolcanada.com www.amphenolcanada.com
 5950 14th Avenue, Markham ON L3S M4M

Amphenol®
Rectangular and Filtered Products