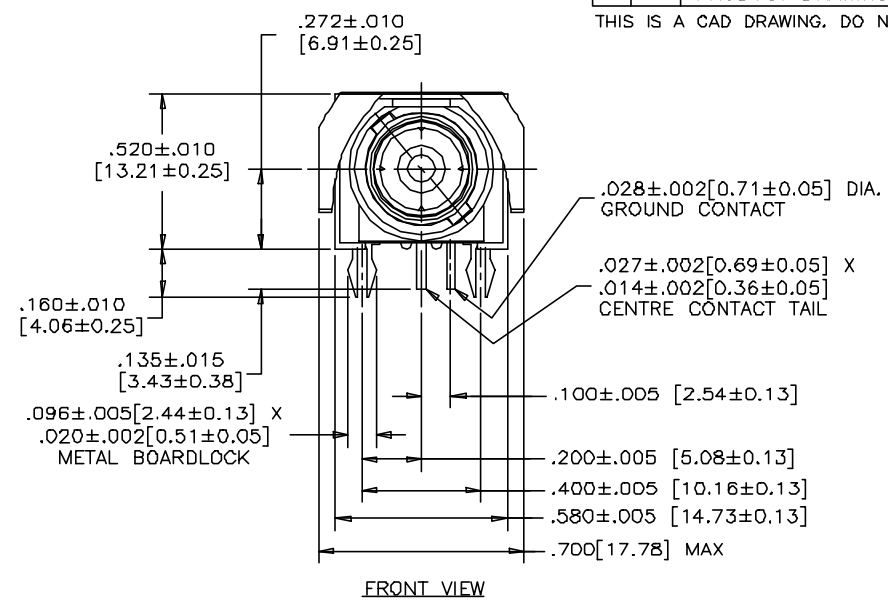
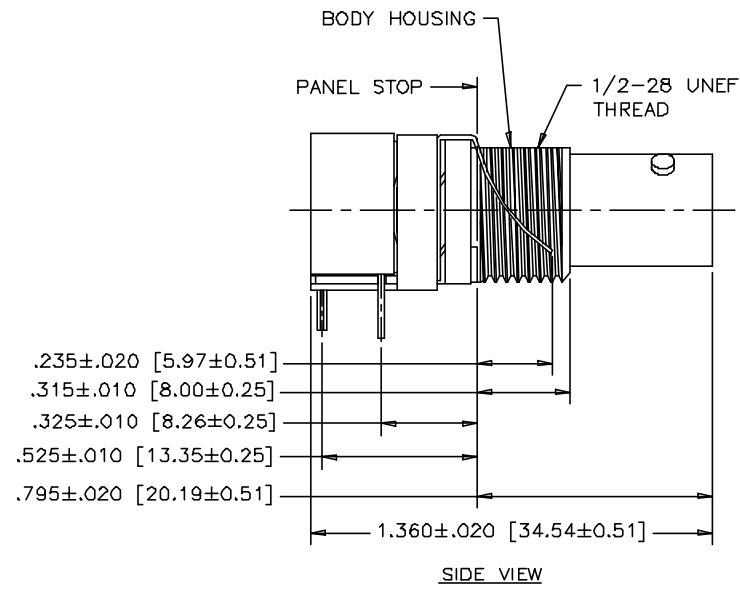


REVISIONS				
SYM	ZONE	ECN, ERN NO.	DATE	APPRD.
A		PRODUCT DRAWING	00/01/14	K.L.

THIS IS A CAD DRAWING. DO NOT MANUALLY REVISE!



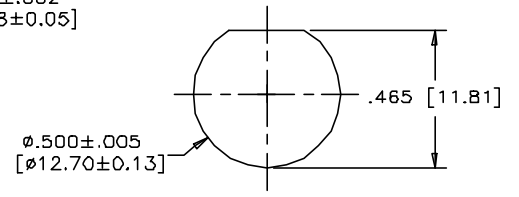
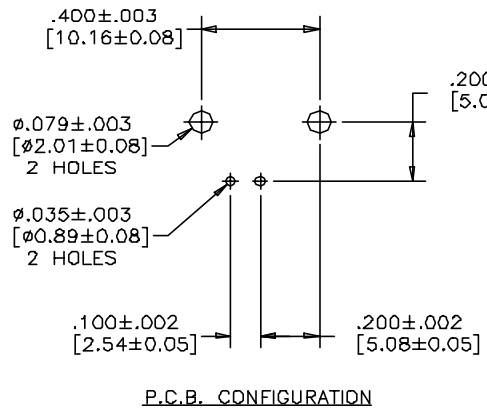
**MECHANICAL SPECIFICATION:**

- BODY HOUSING: THERMOPLASTIC POLYESTER
- PANEL GROUND SPRING: COPPER ALLOY, TIN PLATED
- CENTRE CONTACT: PHOSPHOR BRONZE, 10 MICROINCHES [0.25 MICRONS] GOLD PLATED OVER NICKEL ON MATING AREA AND TIN ON PCB TAIL.
- METAL BODY: HIGH STRENGTH ZINC DIE-CAST NICKEL PLATED

**ELECTRICAL SPECIFICATION:**

CAPACITANCE	5000 pF ± 15% (2 CHIPS)
RESISTOR	1 MEGOHM ±10%
DIELECTRIC WITHSTANDING VOLTAGE	1000 VDC BREAK BY SPARK GAP DEVICE
WORKING VOLTAGE	200 VDC
IMPEDANCE (SEE PART NUMBER)	50 OR 75 OHM NOMINAL
OPERATING TEMPERATURE	-20°C TO +85°C

NOTE: BOARDLOCKS ARE ELECTRICALLY CONNECTED TO THE METAL BODY.



AMPHENOL PART NO.	IMPEDANCE
456-117F	50 OHM
456-717F	75 OHM

DRAWN I.ESSAJEE	DATE 00/01/10	<b>Amphenol Canada Corp.</b>			
DESIGNED					
CHECKED K.LAMBIE	DATE 00/01/13	TITLE 456 SERIES CAPACITIVELY DECOUPLED B.N.C. CONNECTOR, RIGHT ANGLE (WITH SPARK GAP, 5000 pF FILTER AND RESISTOR)			
I. E. APPRD.					
G. A. APPRD.					
DWG. APPRD.					
ENG. REL. NO.		DWG	DRAWING NO.	REV.	
REF. EAR C10925			P-456-X17F	A	
DIMENSIONS ARE IN INCHES [mm]	CODE ID. NO. 03554	SCALE N.T.S.	WT. _____	SURF. _____	SHEET 1 OF 1

THIS DOCUMENT CONTAINS PROPRIETARY INFORMATION AND SUCH INFORMATION MAY NOT BE DISCLOSED TO OTHERS FOR ANY PURPOSE OR USED FOR MANUFACTURING PURPOSES WITHOUT WRITTEN PERMISSION FROM AMPHENOL CANADA CORP.