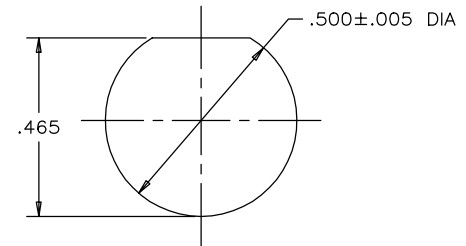
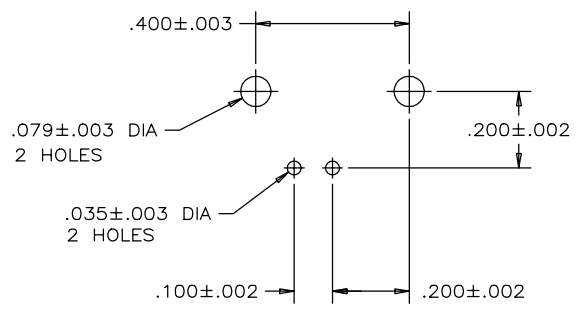
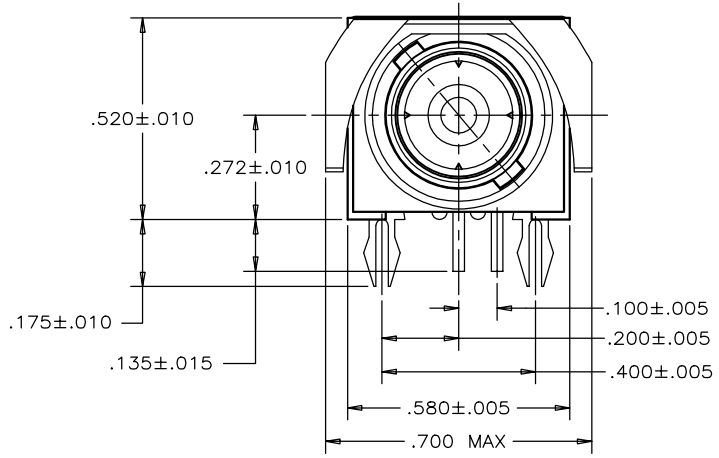
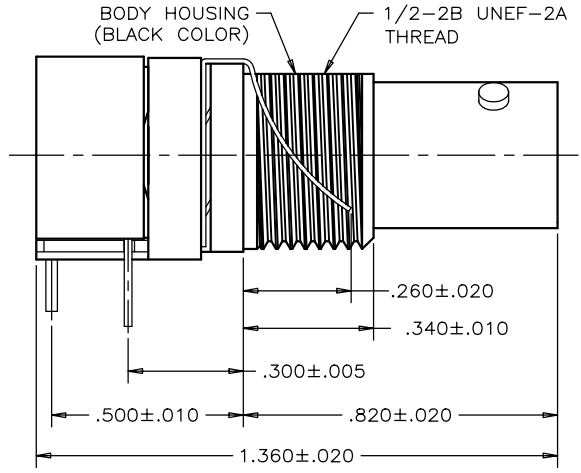


REVISIONS				
SYM	ZONE	ECN, ERN NO.	DATE	APPRD.
C		PROPOSAL	02/03/08	C.B.

THIS IS A CAD DRAWING. DO NOT MANUALLY REVISE!



**MECHANICAL SPECIFICATION:**

- BODY HOUSING : THERMOPLASTIC (HIGH TEMP RESISTANT)  
HEAT DEFLECTION TEMP 294°C @ 1.82 MP<sub>a</sub>
- GROUNDING DEVICE : COPPER ALLOY, TIN PLATED
- CENTER CONTACT : PHOSPHOR BRONZE, 10 MICROINCH  
GOLD PLATED
- METAL BODY : HIGH STRENGTH ZINC DIECAST  
NICKEL PLATED

**ELECTRICAL SPECIFICATION: (TYPICAL 10,000 pF)**

CAPACITANCE	10000 pF ± 15%
DIELECTRIC WITHSTANDING VOLTAGE	1000 VDC
	500 V RMS
WORKING VOLTAGE	200 VDC
IMPEDANCE	50 OHM NOMINAL
OPERATING TEMPERATURE	-20°C TO +85°C

**P.C.B. CONFIGURATION**

**RECOMMENDED PANEL CUT-OUT**

NOTE: BOARDLOCK DEVICE IS ELECTRICALLY CONNECTED TO THE BODY.

AMPHENOL PART NO. 456-117B

THIS DOCUMENT CONTAINS PROPRIETARY INFORMATION AND SUCH INFORMATION MAY NOT BE DISCLOSED TO OTHERS FOR ANY PURPOSE OR USED FOR MANUFACTURING PURPOSES WITHOUT WRITTEN PERMISSION FROM AMPHENOL CANADA CORP.

MATERIAL -----	DRAWN I.ESSAJEE	DATE 93/06/30	<b>Amphenol Canada Corp.</b> TITLE <b>B.N.C. RIGHT ANGLE FILTERED CONNECTOR</b>
	CHECKED		
FINISH -----	DESIGNED F.BRIONES	93/06/30	DWG DRAWING NO. <b>P-456-117B</b>
	APPROVED		
	INDUSTRIAL ENG. APPRD.		REF. DIMENSIONS ARE IN INCHES
	ENGINEERING RELEASE NO.		NO. 03554
			SCALE 4/1
			WT. ----- SURF. ----- SHEET 1 OF 1