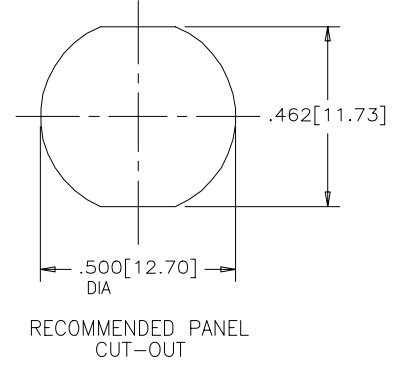
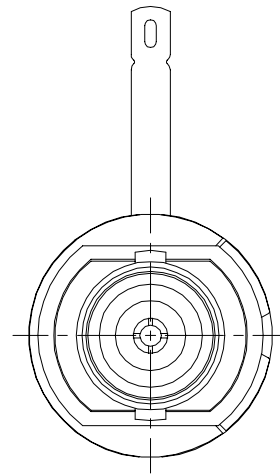
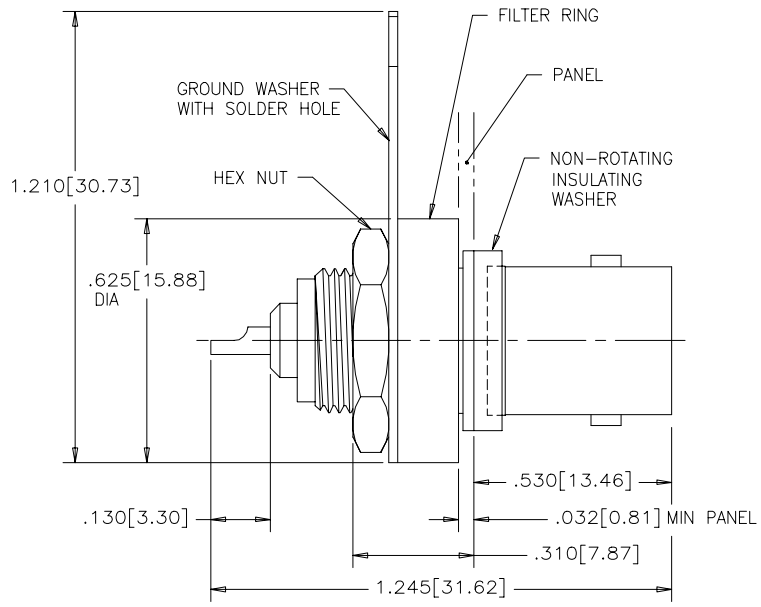


REVISIONS				
SYM	ZONE	ECN, ERN NO.	DATE	APPRD.
C		PROPOSAL	02/11/12	I.E.

THIS IS A CAD DRAWING. DO NOT MANUALLY REVISE.



MECHANICAL SPECIFICATIONS:

- CENTRE INSERT: TEFLON
- METAL BODY: NICKEL PLATED BRASS
- CONTACT: PHOSPHOR BRONZE, SEE PART NO. CHART FOR PLATING.
- GROUND DEVICE: NICKEL PLATED PHOSPHOR BRONZE
- FILTER RING HOUSING: THERMOPLASTIC
- INSULATING WASHER: THERMOPLASTIC

ELECTRICAL SPECIFICATIONS:

- CAPACITANCE: 10,000 pF ±20%
- DIELECTRIC WITHSTANDING VOLTAGE: 600 VDC
- WORKING VOLTAGE: 200 VDC
- IMPEDANCE: SEE PART NUMBER CHART
- OPERATING TEMPERATURE: -20°C TO +85°C

PART NUMBER	CONTACT PLATING	IMPEDANCE
456-107SG	30 MICROINCHES GOLD	50 OHM
456-107TG	30 MICROINCHES GOLD	75 OHM

NOTE: CONNECTOR PACKAGING CONSISTS OF ONE OF EACH OF CONNECTOR, INSULATING WASHER, FILTER RING, GROUND WASHER AND HEX NUT.

MATERIAL -----	DRAWN I.ESSAJEE	DATE 95/06/28	Amphenol Canada Corp.				
	DESIGNED K.LAMBIE	DATE 95/06/28					
	CHECKED						
	I. E. APPRD.						
FINISH -----	Q. A. APPRD.		TITLE 456 SERIES BNC CONNECTOR FRONT MOUNT-SOLDER CUP				
	DWG. APPRD.						
	ENG. REL. NO.				DWG	DRAWING NO.	REV.
	REF.					P-456-107XG	C
DIMENSIONS ARE IN INCHES [mm]		CODE ID. NO. 03554	SCALE N.T.S.	WT. -----	SURF. -----	SHEET 1 OF 1	

THIS DOCUMENT CONTAINS PROPRIETARY INFORMATION AND SUCH INFORMATION MAY NOT BE DISCLOSED TO OTHERS FOR ANY PURPOSE OR USED FOR MANUFACTURING PURPOSES WITHOUT WRITTEN PERMISSION FROM AMPHENOL CANADA CORP.