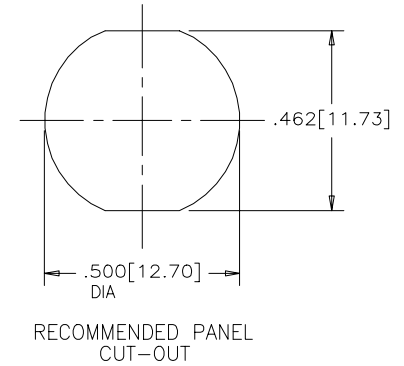
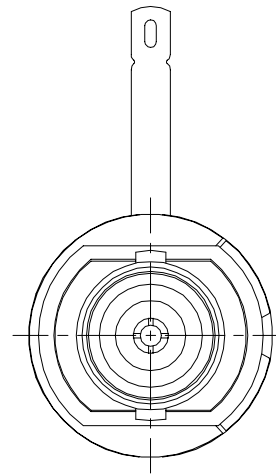
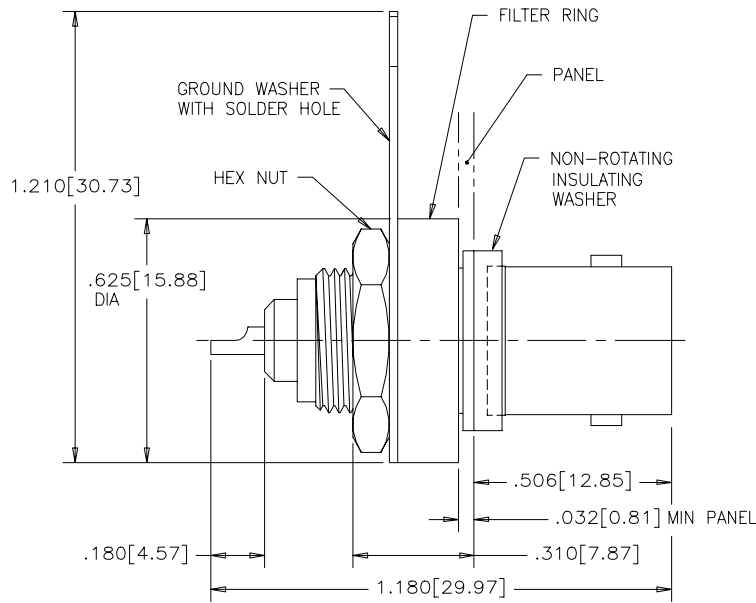


REVISIONS				
SYM	ZONE	ECN, ERN NO.	DATE	APPRD.
B		PROPOSAL	02/11/14	I.E.

THIS IS A CAD DRAWING. DO NOT MANUALLY REVISE.



MECHANICAL SPECIFICATIONS:

CENTRE INSERT: TEFLON
 METAL BODY: NICKEL PLATED BRASS
 CONTACT: PHOSPHOR BRONZE, SEE PART NO. CHART FOR PLATING.
 GROUND DEVICE: NICKEL PLATED PHOSPHOR BRONZE
 FILTER RING HOUSING: THERMOPLASTIC
 INSULATING WASHER: THERMOPLASTIC

ELECTRICAL SPECIFICATIONS:

CAPACITANCE: 10,000 pF ±20%
 DIELECTRIC WITHSTANDING VOLTAGE: 600 VDC
 WORKING VOLTAGE: 200 VDC
 IMPEDANCE: SEE PART NUMBER CHART
 OPERATING TEMPERATURE: -20°C TO +85°C

PART NUMBER	CONTACT PLATING	IMPEDANCE
456-107S	SILVER	50 OHM

NOTE: CONNECTOR PACKAGING CONSISTS OF ONE OF EACH OF CONNECTOR, INSULATING WASHER, FILTER RING, GROUND WASHER AND HEX NUT.

MATERIAL	DRAWN I.ESSAJEE	DATE 95/07/17	Amphenol Canada Corp.					
	DESIGNED F.BRIONES	DATE 95/07/17						
FINISH	CHECKED		TITLE 456 SERIES BNC CONNECTOR FRONT MOUNT-SOLDER CUP					
	I. E. APPRD.							
	Q. A. APPRD.							
	DWG. APPRD.							
	ENG. REL. NO.					DWG	DRAWING NO.	REV.
	REF.						P-456-107S	B
DIMENSIONS ARE IN INCHES [mm]		CODE ID. NO. 03554	SCALE N.T.S.	WT. -----	SURF. -----			
			SHEET 1 OF 1					

THIS DOCUMENT CONTAINS PROPRIETARY INFORMATION AND SUCH INFORMATION MAY NOT BE DISCLOSED TO OTHERS FOR ANY PURPOSE OR USED FOR MANUFACTURING PURPOSES WITHOUT WRITTEN PERMISSION FROM AMPHENOL CANADA CORP.