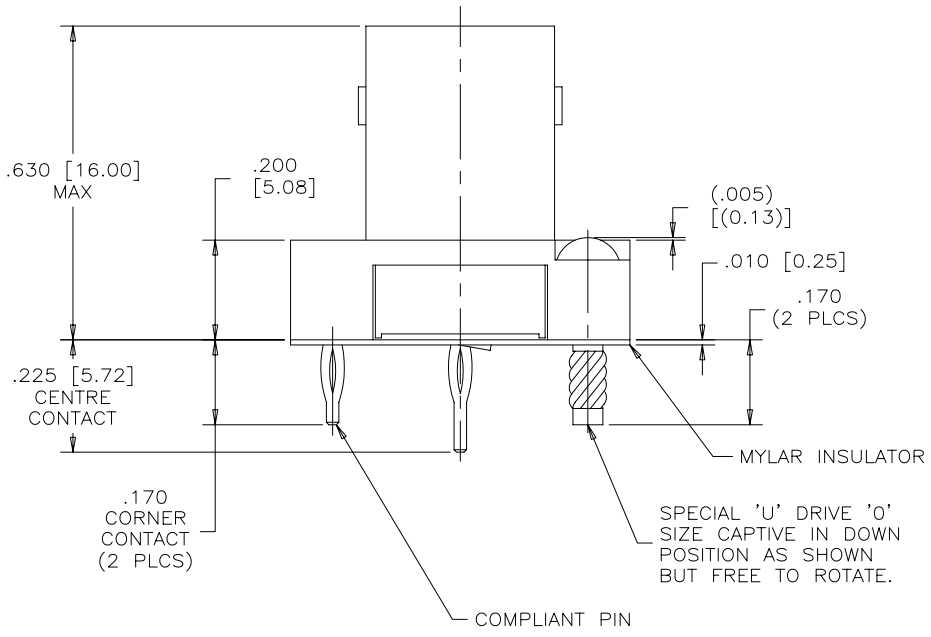
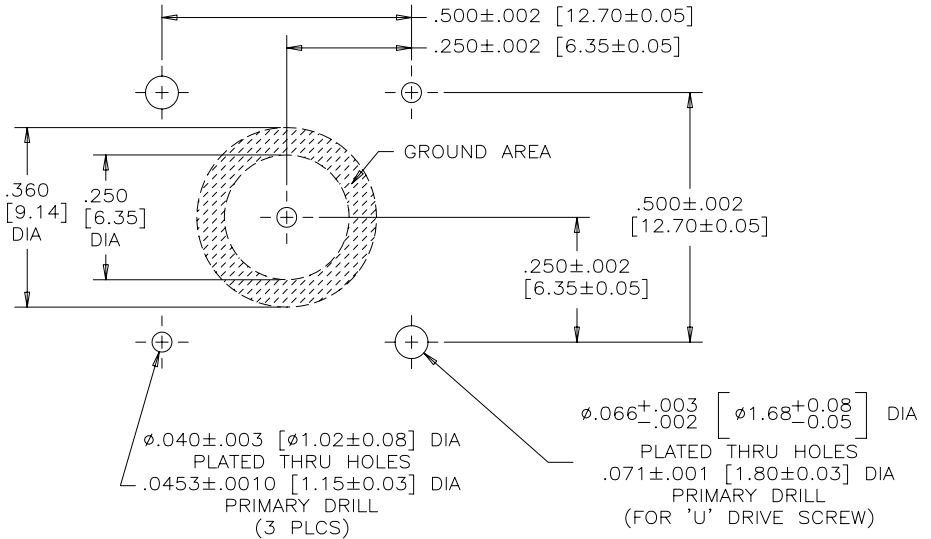
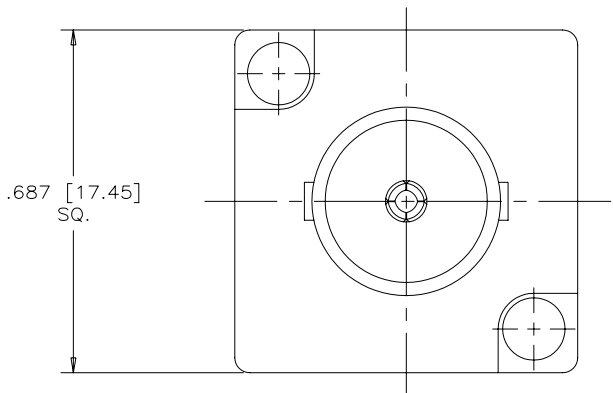


REVISIONS			
REV	ECN, ERN NO.	DATE	APPRD.
D	PRODUCT DRAWING	JUL10/06	K.L.



AMPHENOL PART NUMBER: 456-107-AR1

MECHANICAL TECHNICAL DATA:

MATERIALS:

- SHELL: ZINC DIECAST NICKEL PLATED
- INSERT: TEFLON
- HOUSING: THERMOPLASTIC MATERIAL
- CENTER SOCKET CONTACT: COPPER ALLOY 50 MICROINCHES [1.27 MICRONS] OF GOLD PLATING
- COMPLIANT PIN: COPPER ALLOY TIN-LEAD 60/40 PLATING
- 'U' DRIVE SCREW: STAINLESS STEEL PASSIVATED

ELECTRICAL TECHNICAL DATA:

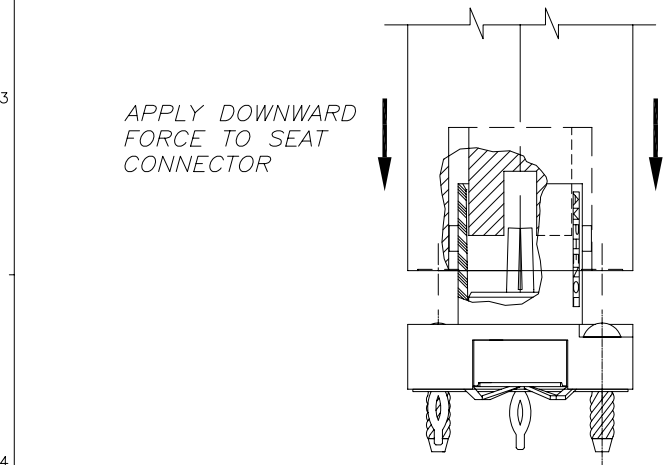
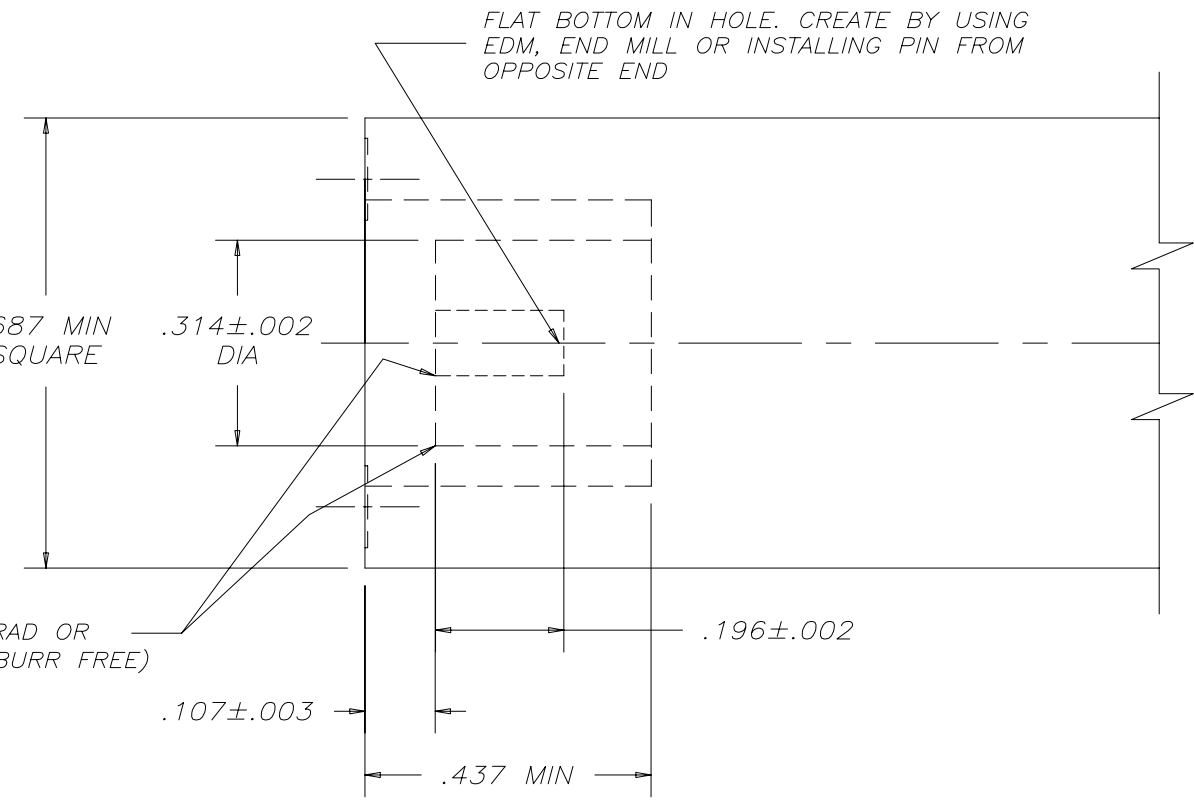
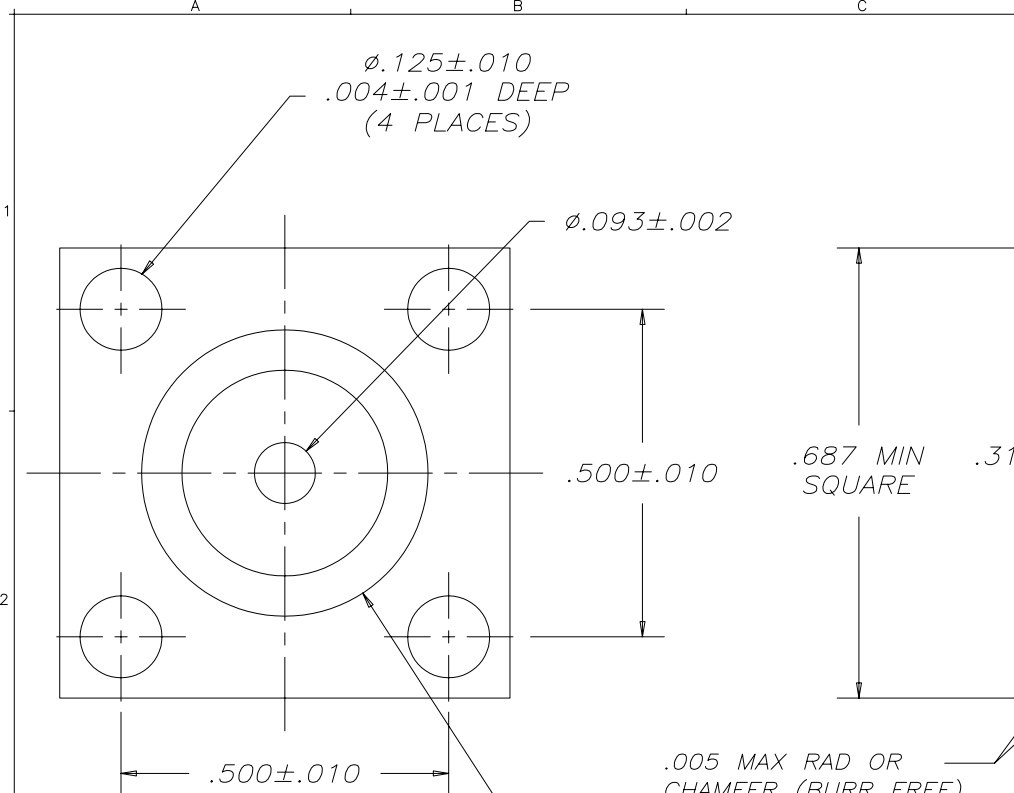
- CAPACITANCE @ 1 KHz: 10,000 pf ±25%
- WORKING VOLTAGE: 1200 VDC
- D.W.V.: 1500 VDC
- DISSIPATION FACTOR %: 2.5
- IMPEDANCE: 75 OHMS

CONNECTOR SEATING TOOL: SEE SHEET 2 OF 2

MATERIAL	DRAWN I.ESSAJEE	DATE 02/10/22	Amphenol Canada Corp.
	DESIGNED		
	CHECKED A.T.P.	02/10/28	
	I. E. APPRD.		
FINISH	DWG. APPRD. K.BOUTROS	02/10/28	TITLE 456 SERIES B.N.C. CONNECTOR STRAIGHT COMPLIANT PIN, 75 OHMS IMPEDANCE, SPECIAL DW & WV (.225 LG. CENTRE CONT.) w/ MYLAR INSULATOR
	ENG. REL. NO.		
	REF. EAR 11981		
	DIMENSIONS ARE IN INCHES [mm]	CODE ID. NO. 03554	
DWG C		DRAWING NO. P-456-107-AR1	REV. D
SCALE 5/1		WT. -----	SURF. -----
		SHEET 1 of 2	

THIS DOCUMENT CONTAINS PROPRIETARY INFORMATION AND SUCH INFORMATION MAY NOT BE DISCLOSED TO OTHERS FOR ANY PURPOSE OR USED FOR MANUFACTURING PURPOSES WITHOUT WRITTEN PERMISSION FROM AMPHENOL CANADA CORP.

REVISIONS			
REV	ECN, ERN NO.	DATE	APPRD.
D	PRODUCT DRAWING	JUL 10/06	K.L.



**NOTES:**

- 1) THIS DRAWING SHEET SHOWS THE RECOMMENDED TIP OF THE CONNECTOR SEATING TOOL.
- 2) ORIENT SQUARE SHAPE OF TOOL WITH SQUARE FLANGE OF CONNECTOR.
- 3) GENTLY LOWER FACE OF TOOL TO LEVEL OF SQUARE CONNECTOR FLANGE BEFORE APPLYING FORCE.
- 4) BALANCE OF TOOL TO SUIT CUSTOMER'S ARBOR PRESS.

MATERIAL  HARDENED STEEL	DRAWN I.ESSAJEE	DATE 02/10/22	Amphenol Canada Corp.		
	DESIGNED				
	CHECKED A.T.P.	02/10/28			
	I. E. APPRD.				
FINISH  -----	Q. A. APPRD.		TITLE 456 SERIES B.N.C. CONNECTOR STRAIGHT COMPLIANT PIN, 75 OHMS IMPEDANCE, SPECIAL DWV & WV (.225 LG. CENTRE CONT.) w/ MYLAR INSULATOR		
	DWG. APPRD. K.BOUTROS	02/10/28			
	ENG. REL. NO.				
	REF. EAR 11981				
DIMENSIONS ARE IN INCHES		CODE ID. NO. 03554	DWG. D	DRAWING NO. P-456-107-AR1	REV. D
		SCALE 10/1	WT. -----	SURF. -----	SHEET 2 OF 2

THIS DOCUMENT CONTAINS PROPRIETARY INFORMATION AND SUCH INFORMATION MAY NOT BE DISCLOSED TO OTHERS FOR ANY PURPOSE OR USED FOR MANUFACTURING PURPOSES WITHOUT WRITTEN PERMISSION FROM AMPHENOL CANADA CORP.