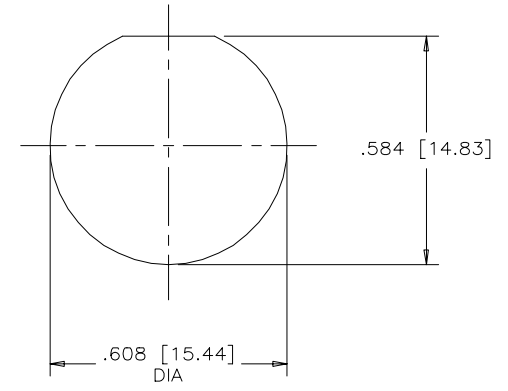
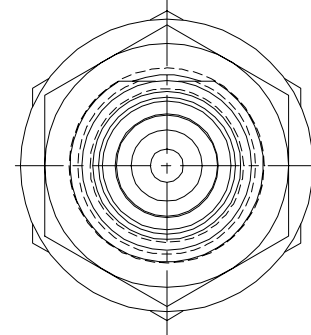
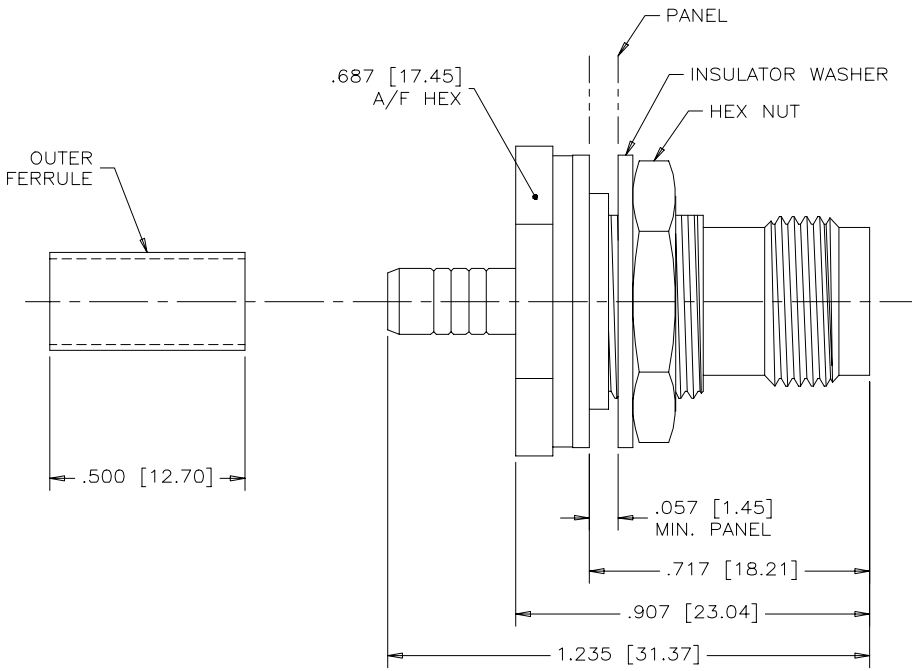


REVISIONS				
SYM	ZONE	ECN, ERN NO.	DATE	APPRD.
A		PROPOSAL	02/11/12	K.B.

THIS IS A CAD DRAWING. DO NOT MANUALLY REVISE.



RECOMMENDED PANEL CUT-OUT

MECHANICAL SPECIFICATIONS:

- CENTRE INSERT: TEFLON
- METAL BODY: TIN PLATED BRASS ALLOY
- CENTRE CONTACT: PHOSPHOR BRONZE, 10 μINCHES [0.25 MICRONS] GOLD PLATED
- INSULATOR WASHER: THERMOPLASTIC
- MOUNTING HARDWARE: STEEL OR BRASS, TIN PLATED

ELECTRICAL SPECIFICATIONS:

- CAPACITANCE: 4,000 pF MIN.
- DIELECTRIC WITHSTANDING VOLTAGE: 600 VDC
- WORKING VOLTAGE: 200 VDC
- IMPEDANCE: 50 Ω
- OPERATING TEMPERATURE: -20°C TO +85°C

AMPHENOL P/N 456-102

NOTE: CONNECTOR PACKAGING CONSISTS OF ONE OF EACH OF CONNECTOR, MOUNTING HARDWARE, PANEL INSULATOR, CRIMP FERRULE AND HEAT SHRINK TUBING.

MATERIAL -----	DRAWN I.ESSAJEE	DATE 02/10/01	Amphenol Canada Corp.			
	DESIGNED					
	CHECKED A.T.P.	02/11/12				
	I. E. APPRD.					
FINISH -----	Q. A. APPRD.		TITLE TNC CRIMP-CRIMP STYLE BULKHEAD JACK FOR RG58U CABLE			
	DWG. APPRD. K.BOUTROS	02/11/12				
	ENG. REL. NO.				DWG	DRAWING NO.
	REF. EAR #11955					P-456-102
DIMENSIONS ARE IN INCHES [mm]		CODE ID. NO. 03554	SCALE N.T.S.	WT. -----	SURF. -----	SHEET 1 OF 1

THIS DOCUMENT CONTAINS PROPRIETARY INFORMATION AND SUCH INFORMATION MAY NOT BE DISCLOSED TO OTHERS FOR ANY PURPOSE OR USED FOR MANUFACTURING PURPOSES WITHOUT WRITTEN PERMISSION FROM AMPHENOL CANADA CORP.